

Rodney Times

Say it with
Sayers

Bring **YOUR** rates
home!

YOUR PAPER, YOUR PLACE

FROM THE EDITOR

On today's front cover are the faces of those wanting your vote during the local body election. These are the people who will make the decisions on how to spend your money. The local boards of Rodney and the Hibiscus Coast have budgets totalling \$50 million in the 2016/17 year. Ratepayers also pay councillors wages of \$100,000, board chairs around \$75,000 to \$85,000, and board members around \$40,000 per annum. By voting you are having a say in matters that affect you. The Albany ward, which includes the Hibiscus Coast, is experiencing stresses and strains. It will be a race to watch this election as left-leaning incumbent councillors Wayne Walker and John Watson face a fight to hold on to their seats against a stiff challenge from Auckland Future's Lisa Whyte and famous Rugby League coach Graham Lowe. Candidate information can be found by visiting the Rodney Times page on stuff.co.nz, our Neighbourly page or our Facebook page.

to do list

1. LIZARD TALK

Forest & Bird talk on lizards at the Totara Park Hall, Warkworth, October 20, 7.30pm.

2. BOAT CLUB

Weiti Boating Club opening day, September 18, 10am-2pm. All welcome. For more information visit weiti.co.nz or call 09 424 5905.

3. FISHING COMPETITION

Twin coast fishing competition fundraiser for Rodney College PTA, weigh in at Rodney Boating & Fishing Club, October 1, 4pm, followed by fish auction. Tickets from Rodney College, Rodney Boating & Fishing Club and more.

4. RODNEY CRAFTS

Make four Christmas craft projects to take home, Totara Park Village Hall, Warkworth, October 15, 12.30pm-5pm. Email kathryn@aspotofstamping.co.nz to book.

5. SPANIEL BIRTHDAY

Tiki Cavalier King Charles Spaniel Club's club's 50th birthday celebrations at Mincher Gardens, 338 Coatesville/Riverhead Highway, September 23-24. Visit tikicavalier.org.nz for details.

This newspaper is subject to NZ Press Council procedures. A complaint must first be directed in writing, within one month of publication, to the editor's email address. If not satisfied with the response, the complaint may be referred to the Press Council. **PO Box 10-879, The Terrace, Wellington 6143.** Or use the online complaint form at www.presscouncil.org.nz Please include copies of the article and all correspondence with the publication.

CONTENTS

3, 4, 6, 7, 9, 11, 12, 13, 14, 17, 18
News
5 Views
8 What's on
19 Puzzles
23 Sport

Contact us **EDITOR:** Rhonwyn Newson 09 421 9134 or rhonwyn.newson@fairfaxmedia.co.nz **AUCKLAND NORTH SALES MANAGER:** Helena Waldron 0278 860 640 or helena.waldron@fairfaxmedia.co.nz **ADVERTISING SALES INQUIRIES:** 09 426 5024 **CLASSIFIEDS:** 0800 022 812 or clsad@snl.co.nz **DELIVERY:** 09 525 2022 or delivery@snl.co.nz **ADDRESS:** Cnr Florence & Alice Ave, Orewa or PO Box 79, Orewa 0946. **Audited circulation** 44,809 (ABC for 12 months to Dec 15) Delivered each Tuesday & Thursday from: The northern boundary at Wellsford up to Mangawhai Heads, down to the southern Albany Heights boundary, including Hibiscus Coast, Warkworth, Snells Beach, Wellsford and Matakana Coast.

Servicing, Repairs, Diagnostics and WOF's

*family owned & operated.
let our family care for your family car*

- FULL MECHANICAL WORKSHOP & WOF
- JAPANESE/EUROPEAN SPECIALISTS
- CLASSIC CARS MAINTENANCE AND REPAIRS
- ALL MAKES AND MODELS
- SERVICING & REPAIRS
- COMPUTER DIAGNOSTICS
- TYRES & WHEEL ALIGNMENT
- BRAKES & STEERING
- RADIATOR REPAIRS
- COURTESY CARS AVAILABLE (CONDITIONS APPLY)
- FREE BATTERY CHECKS !
- FREE LOCAL PICKUP AND DROP OFF !
- FLEET MAINTENANCE: CARS, LIGHT COMMERCIALS AND TRAILERS
- CUSTOMER REFERENCES AVAILABLE

Ph 426 3559 • 45 Foundry Road (cnr of Foundry and Forge Rds)

www.wademotors.co.nz

AU-7335957AE

Fighters bring back the goods

JAY BOREHAM

Rhyme Loto and Tarquin McKinley of Hibiscus Coast MMA both medalled at the 2016 IFMA World Muaythai Youth Championships.

The were among the 20 strong NZ Black Gloves team who brought home 17 medals.

The youth championships saw the two involved in cultural exchanges, education conferences, school visits and of course testing their skills against the world's best in the stifling Thai heat.

Rhyme, of Orewa College claimed silver at last year's event and went straight into the final facing a Thai fighter in his 44-48kg weight division.

The fight came down to the wire and the decision went in favour of the Thai fighter, giving the 11-year-old his second silver.

"It was a pretty good fight. I lost by one point so it was pretty close," Rhyme says.

Tarquin, 12, of Whangaparaoa College, claimed bronze.

He easily overcame a fighter from Kazakhstan in his first fight in his 42kg division, then faced a Thai opponent in his second.

Tarquin won the first round but the Thai fighter came back strong in the second and he was defeated when the referee called the fight, he says.

Rhyme started his martial arts

Rhyme Loto and Tarquin McKinley claimed silver and bronze at the World Muaythai Youth Championships. JAY BOREHAM

career when he was six under the tutelage of his father and coach Ermehn.

"My first couple of fights were in jiu jitsu and then I moved over to kickboxing," he says.

The sport has taught him discipline and respect for other people, but Rhyme's favourite thing about it is training and meeting new people.

"All the people you come

across, all the diversities," he says.

Rhyme plans to be back at the 2017 World Muaythai Youth Champs, but is also code hopping to boxing and will be fighting in the North Island Golden Gloves next month.

He also has the 2024 Olympics, where kickboxing may be introduced, in his sites. But he isn't ruling out entering in the boxing.

Tarquin started kickboxing a year ago to get fitter and stronger for rugby.

The Silverdale United RFC player says he then tried one fight and enjoyed it, so continued.

He too will be heading back to Thailand next year looking for gold and will continue to train and build fighting and competition experience at a North Island competition in November.

METH TESTING SOARS

The cost of testing and repairing methamphetamine-contaminated state houses leapt by more than \$18 million over the past year. Housing New Zealand said it spent \$21m in the year to June 30 checking its properties for meth and cleaning and repairing contaminated properties. That compared with spending of \$2.9m the previous year and just over \$700,000 the year before that. Last year's \$21m spend did not include the cost of demolishing an unspecified number of homes deemed too contaminated to be repaired. The agency said its \$21m spend on meth decontamination needed to be put in the context of the more than \$490m it spent maintaining and upgrading its stock of houses over the past year, a figure that is due to rise to \$520m in the current financial year.

TWIN WRITING

Multiples NZ is holding its first young writers competition. The competition is open to all intermediate and secondary school students (Years 7-13) who are themselves one of two - or three - or more. The topic is "On Being a Teen Twin/Triplet" and the genre is open. It is a chance for twins and triplets to explore the complexities of being a twin/triplet navigating the path from childhood to adulthood. Three cash prizes are up for grabs and the award date is set for November 6. Judging will be done by author and sibling of twin brothers, Marion Day. Go to multiples.org.nz for more information.

GIVEAWAY

Menopause The Musical is an outstanding theatre show and it's in New Zealand after a successful run around the globe. If 90 minutes of non-stop laughter is on your agenda, then you're in luck because we have two tickets to give away. The cast also includes Lynda Milligan, playing an earth mother, Georgia Duder-Wood, as a career professional, and Yvette Parsons in the role of a housewife. The stage play shows at Sky City Auckland from September 22 to October 1. To enter the draw, go to the *Rodney Times* page on neighbourly.co.nz and "like" the Menopause The Musical post before September 21.

Monumental mission nears end

MATTHEW CATTIN

A mission to compile details of Kaukapakapa's war memorial heroes is nearly complete.

The quest was taken on by locals who wished to gather service information and photographs of the 85 service people featured on Kaukapakapa's World War II monument.

Isla Willis, Athol McLachlan and Megan Paterson have now been able to gather photos and information on 68 of the names, including the only women listed, Vera Smith, who served as a nurse.

The women organised a big push for information in the lead up to ANZAC day this year.

"We thought it would be a nice

tie in to open it for the Anzac Day service this year and see if we could ferret out some info on the service people we were still wanting details for," Kaukapakapa Library volunteer Megan Paterson said in April.

The Kaukapakapa Library will host a representative from Auckland Museum's Online Cenotaph Project on September 18, 10am-1pm, to add the information.

Auckland Museum invites the community to attend to assist them in enhancing their records.

There will be an opportunity to learn to lay a virtual poppy against a specific person's name and contribute additional information and images to the record.

Phone Megan on 021 959 017 for more.

Sarah Legg, Isla Willis and Megan Paterson by the Kaukapakapa World War II monument. MATTHEW CATTIN/FAIRFAX NZ

Cool Kids Warkworth

MSD Approved OSCAR Programme

Can anyone recommend a great cleaner?

Take care - flooding on Main Street!

Street BBQ next week - all invited.

Cool Kids

26 September - 7 October
Holiday Programme

(FOR AGES 5 - 13 YEARS)

For more details and enrolment form www.warkworth.school.nz
Phone 027 931 1311 or 09 425 8300 ext 786

Starlight Express skating spectacular

JULIET MCGHIE

Spending hours blissfully rolling around on roller skates sounds like a childhood dream. For 55 dedicated young Whangaparaoa performers from Peaches and Pickles it's been a long haul of hard work.

The performers aged between 4 and 41 have spent the last nine months, since December last year, rehearsing for the famous rock musical Starlight Express. This is the first time a New Zealand amateur theatre group has staged the epic rock musical production, originally composed by musical legend Andrew Lloyd Webber.

The show follows a child's dream in which his toy train set comes to life for a spectacular race. Another first is that a stage won't be used - a huge roller arena will be set up at the Stanmore Bay Pool and Leisure Centre.

"For years we wanted to stage this show but it is a logistical challenge," production manager Sophia Pedersen says. "We're going to bring everything into the Stanmore Bay Pool and Leisure Centre, including a huge screen, scaffolding, plus PA and sound. But I'm sure it will look amazing on opening night."

"The entire cast of 55 has worked so hard, and the show will look amazing when it all comes together."

who all love to perform. "Matthew and I met in the theatre. And Matt always loved Starlight Express growing up," Sophia says.

A real team effort has been needed to put the different elements of the show together for a dazzling show. Electra is played by Jordan Wichman, and Rusty is Samyson Robinson. Director is Charlotte Nightingale, who recently featured as a lawyer on Shortland Street. Musical direction is by the talented Catherine Carr.

New Zealand's number one roller skater Macarena Carrascosa was brought in to do the skate choreography. Additional choreography is by Alicia Chadwick-Cook.

Starlight Express takes place during the school holidays between September 29 and October 2. Tickets are available now through www.iticket.com.

Starlight Express talent, 'Poppa' is father of four Matthew Pedersen and Samyson Robinson is Rusty

SUPPLIED

Roller skating has turned into a family hobby for the Pedersen family. Mum Sophia leads proceedings piecing the show

together as production manager. Dad Matthew Pedersen has a starring role as Poppa, daughter Georgia is one of the Engines -

Nintendo. Younger siblings Charlotte, Benjamin and Ruby all feature too.

The couple has four children

Equestrian trust's new coach

RENEE CLAYTON

Whangaparaoa based charitable trust, Equestrian 4 Everyone is kicking up its heels in delight this spring with the appointment of a new head coach.

New coach, Maria Cooper has gained a great amount of knowledge after working with horses in the United States of America and is excited to start working with E4E.

E4E in it's period of growth is delighted to have found Cooper

and looks forward to what she will bring to the table.

The trust's, Sarah Sharp is excited to see what Cooper will teach their riders, coaches and volunteers.

"All the applicants for the position were excellent, but Cooper stood out - We really couldn't have wished for someone more qualified."

Cooper has many years experience in therapeutic riding - While living and working in America, Cooper trained as an instructor

with the Professional Association of Therapeutic Horsemanship International, and worked as an instructor, equine manager, and volunteer with Gallop NYC.

E4E, has a number of new, initiatives in development and hope that these will become popular highlights.

Cooper is joining the trust this week and will begin meeting clients, and getting to know the organisation.

Visit equestrian4everyone.com for more information.

Maria Cooper stands with her horse.

SUPPLIED

PERFECT PAIR **PERFECT PAIR** **PERFECT PAIR**

Jim Beam 1L
ND
Coke 1.5L

Canadian Club & Dry Cans 10pk

Jim Beam & Cola **OR** Canadian Club & Dry Cans 10pk

Woodstock 5% 330ml Bots 12pk
OR Codys 7% 250ml Cans 12pk

Estrella Damm 4.6% Bots 12s
OR Asahi 5% Bots 12s

Grants 1L

Steinlager Pure Bots 15s

Steinlager Classic Bots 18s

Monteiths Cider Range Bots 12s - *Apple, Lgt Crushed, Pear*

Seagers Gin **OR** Ivanov Vodka 1L

Kahlua **OR** Malibu 700ml

Jameson Caskmates 700ml

Trinity Hill Hawkes Bay Range - White wines

Pepe Lopez Gold **OR** Silver 700ml

Glenfiddich 12YO 700ml

Lindauer Classic & Enlighten Range

Wild Turkey **OR** Wild Turkey American Honey 700ml

Monteiths Beer Range Bots 12s

Jagermeister 1L

White Label Range

Lindemans Bins Range

Oranjeboom 355ml Bots 12s

Heineken Bots 12s

Jack Daniels & Cola 330ml Cans 8pk

Diesel 7% Cans 6pk

Smirnoff Red Ice Bots 10pk

Coruba & Cola 5% 250ml Cans 12pk

Woodstock 7% 330ml Cans 6pk

DB Draught, Export Gold, Tui EIPA, Tui Lager Bots 15s

Conversations

“It’s great to give thanks for a job well done.”

PROFESSIONALISM APPRECIATED

I am writing to you today to express my gratitude and appreciation of the service provided by an HBC local. We are staying with friends in the small town of Waiwera. On Monday, August 22, we arrived home around 10:30am to find that we had no water and, after call our neighbours, found that it was the whole town that was affected. Shortly after our calling we noticed a WaterCare van outside on the road. I approached the young man who introduced himself as Alan Williams from Downer Water who was attending to the issue on behalf of WaterCare Services. Alan explained the situation to me and reassured me that he was dealing with the issue with the utmost haste and would make arrangements for our water to be restored ASAP. Alan then gave us some bottled water which I was very pleasantly surprised by! Within an hour of discovering we had no water, Alan explained he had arranged a temporary supply for the entire town, repaired the

issue with the reservoir and was monitoring reservoir levels and pressures throughout Waiwera to ensure the system was working. Alan was extremely professional throughout and I was very impressed by his standard of communication and ability to deal with a very intense situation in such a calm, positive, friendly and professional manner. We had no further issues with our water and this was truly outstanding service/effort from Downer Water/WaterCare. His efforts and communication throughout the day made the entire situation very easy to understand and deal with.

**Gweneth
Waiwera**

WHAT ABOUT HILL STREET?

It’s unbelievable. The Hill Street intersection for Warkworth won’t be looked at until after 2022 because the Matakana Link road has suddenly been given priority sucking up all the money. The same Rodney District Council thinking that created the Whangaparaoa Peninsula shambles has now done the same

Flowers by Elaine.

Supplied

to Warkworth. We have been abandoned and left high and dry.

**Alan Kendall
Snells Beach**

RELIEF TO FIND GEM

Thanks so much to the kind person who found my large amethyst pendant and carefully hung it on a tree twig for me to find. After my walk I realised it had gone and immediately

GET IN TOUCH ONLINE

“The Matakana Link Rd will suck up all the money.”

retraced my steps and found it, it was a miracle! Bless you,

**Janetta Reitsma
Warkworth**

GARDENING ANGEL

I visited Mitre10 Whangaparaoa to buy two China pots, soil and flowering plants to place outside my terminally ill husband’s bedroom at Fairview Hospital. I was full of tears and found it very hard trying to tell the garden centre attendant what I needed. Between the two of us we chose two lovely royal blue china pots and colourful flowering plants. Next thing without hesitation this compassionate lovely Elaine filled the pots with soil, arranged the plants, took me to the desk to be served and helped me to the car. I was so grateful to Elaine, who I had never met for her kindness to me at such a difficult time. My husband looks out on the colourful display from his bedroom and they are greatly admired by everyone.

Thank you so much Elaine. You are an angel.

**Olive Walker
Tindalls Beach**

ONLINE CHATTER

On which beach is best on the Hibiscus Coast: Totally agree - loads of gorgeous beaches on our peninsular but Orewa comes out tops for me - **Pam Dave Strange via Facebook**

HAVE YOUR SAY

Letters should not exceed 250 words and must have full name, residential address and phone number. The editor reserves the right to edit and abridge. Opinions must be genuinely held by the writer. Letters may be referred to others for right of reply before publication. Mail: The editor, PO Box 79, Orewa or email: rhonwyn.newson@fairfax-media.co.nz.

**NZ Pams Fresh
Carrots/Onions
1.5kg**

**NZ Fresh
Cut Crown
Pumpkin**

**Boneless
Butterfly
Lamb
Shoulder**

**NZ Seedless
Navel Oranges**

**Leonards
Shaved
Ham**

OR D

Whangaparaoa
Your local community store

Finalists in navy contest

ZIZI SPARKS

Two Albany school students are among seven recently announced finalists in a competition being run by the Royal New Zealand Navy to mark its 75th anniversary

As part of the "Operation Neptune" competition, secondary school students developed proposals for short films, songs and musical compositions.

The proposals had to relate to one of the navy's key themes of "Our Navy: courage, commitment, comradeship" or "Our Navy: our roots, our story, our mission".

"I have grown up around the navy and experienced the comradeship."

The seven finalists will make their ideas a reality. Ysabel Pomare, 15, composed a waiata (song) for her entry. The student at Te Kura Kaupapa Maori o te Raki Paewhenua says she's looking forward to performing it.

"My parents and my family are a big part of the navy and I'm excited to perform my waiata in front of them and the rest of the navy," Pomare says.

Kristin School student Laura Jackson said she was immediately drawn to the competition and proposed a short film.

"As I have family in the navy, I have grown up around the navy and experienced the comradeship that is associated with the navy," Jackson says.

Jackson says she's been busy planning what footage she needs and looks forward to learning more about life in the navy.

The finalists' works will be displayed and performed at the International Naval Review's display at The Cloud from November 17 to 22. The winner will be announced on November 20.

Ysabel Pomare is one of seven finalists in a navy challenge. ZIZI SPARKS/FAIRFAX NZ

Super Daylight SAVINGS!

\$20⁹⁹
EACH

JIM BEAM
1.125 LITRE
\$42⁹⁹

JIM BEAM
DEVIL'S CUT
1 LITRE
\$42⁹⁹

JACK DANIEL'S
700ML
INCLUDES
JACK DANIEL'S
HONEY & FIRE
\$37⁹⁹

\$29⁹⁹

\$20⁹⁹

\$9⁹⁹

\$39⁹⁹

\$47⁹⁹

\$36⁹⁹

\$33⁹⁹
EACH

\$36⁹⁹

\$44⁹⁹

\$32⁹⁹

SuperSonicDeals

\$24⁹⁹

\$29⁹⁹

UNDER \$20

\$29⁹⁹*

\$22⁹⁹
EACH

\$29⁹⁹

\$19⁹⁹

Visit: www.superliquor.co.nz or call 0800 SUPERL (0800 787 375) for your local store. 123 stores nationwide. 100% locally owned and operated. Offer ends close of trade 25th September 2016, while stocks last. Available at participating stores only. *Super Sonic Deal Valid 14th - 17th September 2016. Limits may apply at participating outlets. Trade not supplied. Terms and conditions may apply. Available 12th - 25th September 2016 inclusive. Please see www.superliquor.co.nz for details.

Hill Street traffic set to increase

RENEE CLAYTON

Auckland Transport and the NZ Transport Agency have signed an agreement that will speed up the process of the construction of the Matakana Link Road project, but the Warkworth Fix Hill Street Now Action Group says this is not enough as local traffic will more than double at the Hill Street intersection by the time that the link road is complete.

The link road is said to be completed by 2022.

Fix Hill Street Now Action Group member, Roger Williams says, "We support the Matakana Link as it will eventually help with the holiday traffic, but it does very little for [the Hill St] intersection on the average day."

The Matakana Link Road will provide a connection between Matakana Road and SH 1, just south of the intersection with the NZTA's Ara Tuhono Pūhoi to Warkworth highway.

Fix Hill Street Now Action Group member, Grant McLachlan says, "the disjointed planning fails to mitigate the more immediate problem that local traffic will more than double at the Hill Street intersection by the time the Link road is complete. In the meantime, construction traffic for other projects such as this will make the Hill Street intersection congestion exponentially worse."

AT's Andrew Scoggins says, "with Warkworth expected to grow by an additional 7,900 new dwellings over the next 30 years, the link road will be a key road network improvement to help address existing and future travel needs of the community".

McLachlan believes that while it is practical to have a choice of routes between Matakana Road and SH 1, over time the link road will be choked by the development of 2200 houses flanking its route.

"NZTA has set aside \$100m for Warkworth intersection improvements.

"We believe there is a solution to fix Hill Street now with what's left from that budget," McLachlan says.

Fix Hill Street Now Acton Group founder Mike Francis believes people may have missed that the link road will not be in place and usable until 2021 or 2022.

Growing ranks on the long commute

RENEE CLAYTON

As housing prices in central Auckland continue to increase, more people are choosing to commute from distant suburbs and wait in traffic for sometimes hours to get to work.

Rodney Times reporter Renee Clayton caught up with one such resident, Kelly Andrews from Warkworth, to see how traffic on a standard Friday was for her travelling to her work in Ellerslie.

On average Andrews travels about 60 kilometres north of Auckland and usually manages to get to work within an hour if she gets good traffic or rides her motorbike.

If the weather is bad, it can take her around an hour-and-a-half to get to work in the car.

"To avoid the extremely slow traffic around 7.30am Monday to Friday, I have to leave home at around 6am to get to work around 7.30am," Andrews says.

In the past she has had to wait for up to three hours in traffic to get to work.

Travelling to the city is not the only commuting that is going on due to the housing prices - Penny Barnes, her husband and daughter commute daily from Wellsford to Albany.

"We thought buying a home in

the Auckland region would be impossible, but with some research I found surrounding areas in the North and South that were doable," Mrs Barnes says.

"We were going to buy in Warkworth and Snells Beach but then discovered Wellsford was only 12 minutes up the road and we could buy a much bigger home and section at a more affordable price."

Andrews puts it simply. The reason she commutes? "Because I love the lifestyle and it is cheaper to live in Warkworth."

According to a August 2016 suburb report, to buy a three bedroom house in central Auckland is on average \$1,105,107, and to rent a three bedroom is on average \$911 a week. In Warkworth to buy a three bedroom house it is on average \$797,667, and to rent a three bedroom is on average \$481 a week.

Andrews has been commuting for just over three months and says, "today is a good day for us."

"In the mornings I usually stop off at a petrol station and pick up an energy drink and blast my music really loud to get me through my trip."

Through the toll road and up until Greville Road she was able to travel at around 100km. After Greville Road the speed went

Bad weather can make the commute time much worse.

down to 80km, and shortly after that she was crawling at a speed of 30km at Northcote. From the end of the bridge the speedometer sat around 60km.

"The traffic changes each week and every day, so bad that sometimes you would swear that it is

the weekend."

Andrews is a Maintenance Controller for LeasePlan NZ and says: "It is hard to find decent jobs near Warkworth, so to earn decent money you have to commute."

Andrews spends around \$80 a

week on petrol for her car and \$25 on the toll road. If she takes her motorbike it will cost her \$40 in petrol and \$40 for the toll.

She leaves work at 5pm and it can take her sometimes close to two hours to get home as the traffic is a lot worse.

KEVIN STENT/FAIRFAX NZ

Have you got what it takes to join the NZ Team to represent NZ in the upcoming World Magic Cup held on 18th – 20th Nov in Rotterdam, the Netherlands?

The main event is on Sunday 18th for which you need to have qualified to enter.

You can qualify by getting enough points over the season or come 1st in one of the Last Chance Qualifiers on Saturday 17th.

What's On

Get involved!

SEPTEMBER 15

Forest & Bird talk: Talk on local birds in our area with photographer Michele Mackenzie, Totara Park Hall, Warkworth, 7.30pm.

Waitakere Forest & Bird talk: Dr James Russell on emerging issues in predator control at Kelston Community Centre, 7.30pm. All welcome. Email lizanstey@hotmail.com for more.

Waitoki School Quiz Night: Doors open at 7pm, with quiz starting at 7.30pm. BYO drinks and nibbles and prize for fancy dress. Eight people to a team. Tickets available from the school office for \$10 per person or phone 09 420 5244.

SEPTEMBER 17

Waiwera Ashram: Then and Now talk by Loveday Kingsford, Waiwera Ashram, 9 Waiwera Place, 1.30pm. Gold coin donation. All welcome. Phone 09 426 5265.

SEPTEMBER 17-18

Life in Rodney: North Rodney Community Arts Council Art Awards 2016, Old Masonic Hall, Warkworth, 10am-4pm Saturday and 10am-3pm Sunday.

SEPTEMBER 18

Fairy tern AGM: Annual General Meeting of the New Zealand Fairy Tern Charitable Trust, Senior

Citizens' Hall, Fagan Place, Mangawhai Heads, 2pm. Reports, election of committee, guest speaker Ngaire Tyson. All welcome.

Weiti Boating Club opening day: All welcome, 10am-2pm. For more information visit weiti.co.nz or call 09 424 5905.

Kaukapakapa Village Market: Markets from 9am-1pm with live music, stalls, food, Lions sausage sizzle & book fair, barista coffee and more. For more information or to book a stall phone Sarah on 0274 831542 or email sarah1@maxnet.co.nz.

Public meeting: Orewa Residents and Ratepayers, Albany Ward and Hibiscus and Bays Local Board meeting at Orewa Community Centre, 2pm-4pm.

SEPTEMBER 19

Flower & Vegetable Show: Hibiscus Coast Garden Club show at Whangaparaoa Hall, from 12.30pm. Members welcome to display their chosen garden flowers, fruit or veges. Door charge \$3. All welcome. Phone Zelma on 09 424 4112 or Annabelle on 09 424 8873.

St John information evening: Learn about CPR, heart attack symptoms, strokes and more at Matakana Hall, 7pm. Not a certified course. Demonstrations and more. Entry gold coin donation for St John.

St John information evening on September 19.

RICKY WILSON/FAIRFAX NZ

All welcome. Phone Penny on 09 422 9585 for more.

Candidates meeting: Meet the Rodney Local Board candidates at Mahurangi East Community Centre, 7.30pm-9.30pm.

Public meeting: North Shore Ward meet the candidates meeting at Beach Haven Hall, 7.30pm-9pm.

SEPTEMBER 20

Hibiscus Coast Folk Music Club: An evening of acoustic traditional, contemporary and new folk songs at

the Orewa Tennis Club rooms in Victor Eaves Park, 7.30pm. Local and visiting musicians, limit of two songs per person/group. Contact Paul on pauljonson@xtra.co.nz or 027 561 9876 for more.

NZ Society of Genealogists: Iris Taylor will speak on World War 1 nurses at St Chad's Church, Orewa, 2pm. All welcome. Phone Wendy on 09 424 5779 for more.

Free Zumba: Free Zumba opening class at Red Beach School Hall, 7.30pm. Visit

20% OFF
TIMBER HUTTERS

TO HARVEY'S STANDARD TIMBER SHUTTERS. EXCLUDES SHAPED, BI-FOLD, SLIDING OR X SHUTTERS. DISCOUNT DOES NOT APPLY TO INSTALLATION. OFFER AVAILABLE UNTIL T 2016. QUOTATIONS MUST BE ACCEPTED (WITH DEPOSIT PAID) BY 14 OCT 2016.

CURTAINS • BLINDS • SHUTTERS
BOOK A FREE IN-HOME CONSULTATION TODAY!

Call 0800 00 88 80 or book online harveyfurnishings.co.nz

See our website for more custom making offers

Pick up or drop off
Bins available
\$ CASH FOR SCRAP \$
35 Forge Rd, Silverdale
PH 0800 141 530

7167511AA

Short Story awards

Enter now

Entries for the *Sunday Star-Times* Short Story Awards 2016 are now open.

Now in their 32nd year, these awards are among New Zealand's most prestigious and established writing prizes.

The competition has helped launch the careers of many well-known writers including **Eleanor Catton** and **Barbara Anderson**.

In association with Penguin Random House, it's your chance to win \$1000, critical feedback and have your winning story published in the *Sunday Star-Times* - it's time to get writing.

The divisions are:

Open division
3000 word limit, judged by Stephanie Johnson, author and winner of the Montana New Zealand Book Awards

Secondary school division
2000 word limit, judged by Paula Morris, author and University of Auckland creative writing convenor

Non-fiction essay
2000 words on the theme "I read the news today, oh boy" judged by Jonathan Milne, *Sunday Star-Times* editor

Events

Entries must be brief and include the name of event, location, date, time and contact information. Email details to matthew.cattin@fairfaxmedia.co.nz well in advance.

Publication is subject to the editor's discretion and a fortnight's notice. For a public notice contact classifieds by free phoning 0800 022 812 or email north.class@snl.co.nz for details.

carolina477.zumba.com for more.

SEPTEMBER 22-25

Screenies Festival: Second annual children's international film festival at TAPAC, 100 Motions Rd, Western Springs. Tickets from \$8.50. See screenies.nz for more.

SEPTEMBER 23

Kowhai Art & Craft Club: Open day in Warkworth on State Highway 1 North, opposite Z petrol station, 10am-2pm. Refreshments provided. All welcome. Phone 09 425 5664.

State of Mind: Music at Dairy Flat Community Hall, Postman Rd, 8pm-11.30pm. Entry \$10 or \$7.50 with a plate. Cash only. Visit Stetson.co.nz or 09 626 2690.

stardom

What we're reading

An astonishing memoir from one of the world's greatest writers. Funny and incisive, this is a thrilling journey into the worlds of his 'secret sharers' - the men and women who inspired some of his most enthralling novels.

Bland, boring and forgettable?

SIMON MAUDE

Their billboards may be staring down at us. They're spending money to make us notice. But most Aucklanders remain happily oblivious to who the city's mayoral contenders are.

In an informal survey of pedestrians on well-to-do Ponsonby Rd, most struggled to recognise the leading mayoral contenders. Though, showing they are not completely politically unaware, they scored 100 per cent on recognising Donald Trump.

Len Brown, the current two-term Auckland mayor (who achieved notoriety for revelations of his extra-marital affair with Bevan Chuang), was recognised by four out of six. Front-running mayoral candidate Phil Goff also managed to score four out of six. No such luck for his main challengers Vic Crone, Mark Thomas and John Palino who scored just one apiece. University of Auckland emeritus politics professor Barry Gustafson was surprised most people couldn't recognise Auckland's mayoral candidates.

"I drove up to Warkworth the other day and you couldn't help noticing them all up on

billboards," Gustafson said. At two successful ID's, Olympic bronze medallist Eliza McCartney beat Crone, Thomas and Palino. Perhaps Auckland's candidates are just too boring compared to America's Donald Trump?

Gustafson agrees, saying not one candidate's election manifesto excites. They pale in comparison even with the rather tame Len Brown - who beyond his head-

line affair, at least also offered entertaining outbursts of street-jive banter or breaking out into song. So far none of 2016's mayoral wanna-be's have dropped their guard revealing idiosyncrasies anywhere close to Brown's.

But neither have any delivered sober yet brilliant solutions to Auckland's problems that inspire.

"It's a two-way thing [Auck-

land voters] have to be interested enough [in the candidates]. It's a lack of interest, people register things they're really interested in, they're interested in some issues, transport, tax and housing, they're really annoyed and worried about a lot things but it doesn't necessarily translate into people because they're not sure where [the candidates] stand on these issues," Gustafson says.

All respondents knew
The Don. CARLO ALLEGRI

Cycling popular in City centre

MARY FITZGERALD

An extra 45,000 Aucklanders have taken to two wheels in the last year.

Auckland Transport's annual Walking and Cycling Survey reveals that 353,000 people are using bikes, up from 308,000 in 2015.

AT's cycling and walking manager Kathryn King says the positivity is reflected in the cycle counts.

"We are seeing continual growth in cycle trips across the region with the biggest increase in the city centre.

"We are seeing continual growth in cycle trips."

"It's great to see an increase in the number of people cycling to places like schools, local shops, work and to public transport interchanges."

According to Bike Auckland, many people cycle just for fitness and it is the main reason people currently ride, while many also do it for other reasons such as going to shops or commuting. The AT survey results show non-exercise, recreational trips have increased.

According to King, the new protected cycling infrastructure such as Auckland's inner city pink Lightpath is making cyclists feel safer, leading to an overall positive perception of cycling in Auckland to rise from 22 per cent to 39 per cent. More than 34,000 people cycle to work but the study reveals that there are a further 144,000 who could cycle to work.

King says that one of the main ways to get people cycling is good quality, connected cycleways.

Go to the AT website to view the full survey.

Meet the candidates in your area

STAFF REPORTER

Numerous opportunities to meet your Local Board candidates are coming up this September.

RODNEY WARD

The Rodney Ward consists of the Rodney Local Board.

SEPTEMBER 19

Meet the candidates at Mahurangi East Community Centre, 7.30pm-9.30pm.

SEPTEMBER 24

Join Greypower to meet your local candidates at Shoemith Hall, Warkworth, 10.30am-12.30pm.

ALBANY WARD

The Albany Ward consists of Hibiscus & Bays and Upper Harbour Local Boards. Hibiscus &

Bays is split into Hibiscus Coast Subdivision and East Coast Bays Subdivision.

SEPTEMBER 18

Orewa Residents and Ratepayers, Albany Ward and Hibiscus and Bays Local Board meeting at Orewa Community Centre, 2pm-4pm.

NORTH SHORE WARD

The North Shore Ward consists of Kaipatiki and Takapuna-Devonport Local Boards.

SEPTEMBER 19

North Shore Ward meet the candidates meeting at Beach Haven Hall, 7.30pm-9pm.

SEPTEMBER 22

Kaipatiki Local Board at Mission Hall, Glenfield Community Centre, 7.30pm-9pm.

Meet your Local Board candidates this September.

GILL ALCOCK

We're showcasing our talented residents!

Browse a wide range of art, photography, pottery, plants and craft stalls or grab yourself some delicious homemade produce and baking. Watch knitters and spinners demonstrate their crafts or enjoy all the fun gala day activities including white elephant stalls, raffles and sausage sizzles.

View our beautiful new serviced apartment with show homes open to view!

Drop into our Divine Café while you're here for a great cup of coffee and a bite to eat.

For more details please call Andrea Hinchco on 09 425 1200.

Come and see why
we love the life at Summerset

Art & Craft Gala

Sunday 18 September, 10am – 4pm

Summerset Falls

31 Mansel Drive, Warkworth

Love the life

Chicken Breast Fillets
Skinless, Boneless

9⁹⁹
kg

Beef Rump Steak/Rump Roast

13⁹⁹
kg

Hass Avocados

2 for
3⁰⁰

Fresh 4 Kids/You Bi Colour
Seedless Grapes 500g Product of USA

3⁹⁹
ea

Loose/Truss Tomatoes

7⁹⁹
kg

Fresh Hoki Fillets
Catch Permitting

8⁹⁹
kg

Griffin's Choc Chippies/Krispie/
Shrewsbury/Stripes/Hundreds
& Thousands/Gingernuts/Malt/
Milk Arrowroot/Wine Biscuits 250g
(Excludes Choc Krispie)

3 for
5⁰⁰

Stoneleigh Range
750ml (Excludes
Latitude/Rapaura/
Wild Valley)

11⁹⁹
ea

Steinlager Pure/Stella Artois
330ml 12 Pack Bottle

20⁹⁹
pk

Limited to 48 assorted

Limited to 10 assorted

\$440m profit from parking

TOM DILLANE

Auckland Council will earn \$440 million profit from parking charges over the next 10 years - an amount described by mayoral candidate Vic Crone as akin to a "corporate sized profit".

The money is not clearly reported in the council's Long Term Plan budget for 2015-2025, instead pocketed away as an amount that contributes to lowering "general rates" for Auckland residents. Mayoral candidate Vic Crone says it is not clear where this redistribution of parking revenue is actually going within council's budget. It is not included under council's declared "surplus of operating funds" from parking.

Auckland Transport (AT) media relations manager Mark Hannan said some of AT's parking revenue goes into reducing rates, but did not elaborate on the numbers.

"The revenue from Parking Services directly contributes to the council's ability to maintain lower rates to Auckland rate-payers," Hannan said when contacted.

He also said, parking prices were not set to maximise revenue "otherwise we would charge the same as Wilsons and other

providers".

"Lower levels of enforcement or revenue would also mean rates would have to rise to compensate."

But Crone said: "It only costs about \$360m to operate these parking services, leaving it with a tidy surplus of around \$440m over ten years."

"For council to make a profit of that much is not a public service, it's a corporate profit."

"We are robbing people in terms of parking, that's not the purpose of council."

AT said there had been a considerable increase in demand for parking over the past three years, with average peak occupancy in central Auckland rising from 73 per cent in 2013 to 88 per cent by last year. Auckland Transport tripled its parking charges on city fringe streets in June this year. In some places around the city fringe streets parking for an eight-hour day is set to go up from \$16 to \$43. Crone said she would look to change the situation if elected mayor.

"Any surplus from parking revenue across the city will be put into an investment fund dedicated specifically to public transport infrastructure, not into a big leaky bucket."

The battle for Auckland's town hall is the hottest ever this year.
MICHAEL BRADLEY

Competition hot for hopefuls

SIMON MAUDE

The numbers are bigger and the competition hotter for Auckland's 2016 local body election hopefuls and the mayoral fight will be one to watch.

In the left corner Phil Goff. (Well sort of. He's busy positioning himself as centrist, moderate, man for all the people.) In the right corner, a whole crowd of them. In 2013, pre sex-scandal centre-left incumbent Auckland Mayor Len Brown saw-off just one

serious challenger, John Palino. This October Palino's back tilting for the mayoralty along with fellow right-of-centre candidates Vic Crone and Mark Thomas up against centre-left Phil Goff. University of Auckland emeritus politics professor Barry Gustafson said Palino, Crone and Thomas are all using the same right-wing policy play book of bare-basics council services and privatisation. Goff differentiates from that trio by incorporating traditional social-democrat style

policies such as using rates as a social lever and retaining rate-payer owned assets. Crone enjoys "overwhelming support" from National's Auckland political machine, he said. But she faces a tough time going up against Goff. A former Labour Party leader, Foreign Minister, Defence Minister, Justice Minister (etc) and now newly "Independent", Goff on paper enjoys an advantage being Brown's only potential centre-left successor able to Hoover-up left-of-centre Aucklanders votes.

SILVERDALE
Corner SH1
and East Coast Road
Ph 09 426 8883

WHANGAPARAOA
Unit T1, Karepiro Korner,
15 Karepiro Drive
Ph 09 428 5692

AUSTRALIAN FRESH ROUND BEANS

\$1.99 300G BAG

NZ NO.1 RED KUMARAS

\$2.49 KG

NZ FRESH SPINACH

\$1.99 BAG

AUSTRALIAN STRAWBERRIES

\$7 for 2 PUNNETS

NZ LARGE HASS AVOCADOS

\$1.99 EACH

CALIFORNIAN RED GLOBE GRAPES

\$4.99 KG

NZ LARGE ROUND EGGPLANT

\$1.99 EACH

NZ RICHARD SPECIAL SEEDLESS MANDARINS

\$2.99 800G BAG

NZ TRUSS TOMATOES

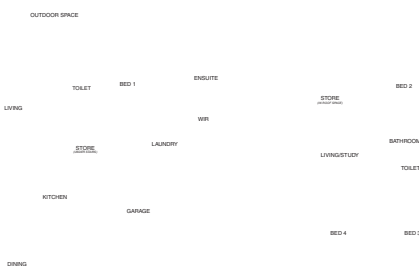
\$7.99 KG

NZ NAVEL ORANGES

\$1.49 1 1/2 KG BAG

All goods while stocks last. Specials valid until Sunday at 6.30pm.

- Coastal lifestyle in a growing community
- Located just a 5 minute walk from Orewa Beach
- Close to walking/bike trails and bowling clubs
- Plentiful nearby restaurants, cafés and shops
- Walking distance to community facilities, doctors and local RSA



» House: 208m²

Levels: 1

3 4 2 2

From: **\$366,582**

Coastal wildlife corridor up for sale

DELWYN DICKEY

One of the last havens for wildlife close to Orewa and Hatfields beaches is being offered up to developers.

The 29 hectare bush property backing the Alice Eaves Scenic Reserve is a bush corridor connecting the coast with significant bush to the west of State Highway 1.

Approval has been given for a seven lot subdivision though, with around a kilometre walk to the beaches, they're certainly not waterfront.

But public concerns over the loss of bush and wildlife may be allayed somewhat as consenting conditions of the land zoned 'Rural Conservation' should see the bush corridor stay largely intact.

Initial conditions have been

tightened up by council and four of the bush blocks connected to the scenic reserve will be protected by covenanting with no stock allowed. House sites will only be permitted next to Hillcrest Rd in Hatfields Beach and no other permanent structures will be allowed in the bush.

These blocks in turn will be connected to a proposed 12ha public reserve which also connects to the Alice Eaves Scenic Reserve.

The picturesque Nukumea stream, running the length of the land, and forming a freshwater highway for native fish and eels would be included in the new public reserve.

Protecting the stream and the bush corridor was part of consent conditions imposed when the Northern Gateway Toll Road was consented.

Two viaducts were built to pro-

tect bush corridors at the Nukumea stream in Orewa and the Otanerua stream in Hatfields Beach.

Part of this protection saw the Nukumea stream become part of an experimental giant kokopu release in 2009. The fish are one of four threatened species that make up whitebait with Mahurangi Technical Institute at Warkworth setting up a restoration programme. With youngsters now being found in the stream, it has been hailed a success.

Prestige Realty (Hibiscus Coast) are marketing the property to developers and say one of the blocks may be able to be further subdivided.

Auckland Council say subdivision is a discretionary activity and the minimum site size is 10 hectares and there would have to be an average of 20 hectares.

Consent conditions include protection of native bush and a new public reserve including the picturesque Nukumea stream.

Divers clean up the coastline

CATRIN OWEN

Our little country is known for its beautiful beaches and coastline, however our marine life is at risk with litter dumped in our waters. On September 7, divers braved the chilly waters of the Waitemata Harbour to clean up rubbish off the ocean floor. Kelly Tarlton's divers submerged at Okahu Bay and within 20 minutes hauled a decent catch of plastic, household junk, fishing line and even a push scooter onto the jetty.

"It really is an eye-opener to the amount of rubbish in our local coastlines and waterways, imagine what this is doing to our marine life," diver Jo Woolcott says.

The ocean dive was part of Conservation Week, an initiative led by the Department of Conservation, aiming to raise awareness about why it's important to keep New Zealand's coastlines clean. Kelly Tarlton's curator AJ Christie says marine debris can have disastrous effects on marine

life.

"This year alone, five turtles have washed up on New Zealand beaches injured or sick," he says.

"In many cases the turtle has ingested plastic - something that could be prevented."

Over the past 30 years, Kelly Tarlton's staff have collected more than 550 kilograms of rubbish from New Zealand beaches. DOC's Conservation Week spokesperson Dawn Muir says taking part in a local conservation activity benefits the environment.

Josh Fretwell with some of the items they found when diving for rubbish.

Advertisement

SAYERS SAYS MORE ACCOUNTABILITY NEEDED

Voting forms arrive this weekend for the Auckland Council elections.

Councillor candidate Greg Sayers hopes people will take action and vote for change.

"It is deeply disappointing about how little of our rates, including development contributions, have been spent back in the area over the last six years," says Mr Sayers.

Rodney ratepayers' pay \$70 million a year in rates and another \$87 million is collected via fees and development contributions. The new transport tax, now added onto the rate bill, gathers a further \$5 million a year. In total \$162 million is paid to Auckland Council by the people of Rodney.

Spent back into the area is \$13 million via the Local Board budgets, \$40 million via regional services and road maintenance budgets and \$4 million for paying off capital investments into stormwater, seawalls and other infrastructure projects.

That adds up to \$57 million in rates returning to the district. This means over 65% of the local rates are being used to fund massive central Auckland projects that provide little or no benefit to the people of Rodney.

Greg Sayers has compiled and released these latest Auckland Council numbers ahead of the Auckland Council elections to inform the public of his findings.

"It appears to be misleading to be told all our rates are being spent back here," he says. "It is disappointing I have had to seek these numbers out, rather than having them made public on a regular basis".

The syphoning of money out of the district has resulted in Rodney's top planning issues remaining uncompleted. These are Structure Plans to get

Councillor candidate Greg Sayers.

infrastructure built ahead of growth, plans to designate land for link roads, plans to fix town intersections and public transport plans are without funding.

"What we need is someone who will take stronger action and who will give greater accountability back to ratepayers", says Mr Sayers.

"If you vote for me I will be demanding quarterly reports on the money paid by Rodney ratepayers to council, and the money that is returned to our district, so we all know where we stand."

Head Light Repairs

Our revolutionary headlight restoration is superior than conventional methods such as polishing or buffing because it restores the new factory shine with 1 year antifade warranty.

Rust Repair

Just been to your W.O.F Centre and failed the Warrant. We may be able to help with visible body rust, and we will be completely honest about the quality that we will be able to deliver. So come and see us, and we'll do our best to help in any way we can.

Panel Beating

The trained professionals at Hibiscus Coast Panel Beaters will restore your vehicle back to original form and make them look as good as new. **Special Offer \$100 off Insurance Excess when you mention this ad.**

AU-728879AL

Share your stories at
New Zealand's
newest online
community for
Over-60s.

Join today at
oversixty.co.nz

Straight from the orca's mouth

MATTHEW CATTIN

Recent whale and dolphin visits to Hibiscus Coast have many concerned about human interactions with marine mammals.

Nearly every day this month has seen whale or dolphin activity on the Hibiscus Coast, according to sightings posted on Facebook.

While sightings never fail to create a buzz, activity of those sharing the water with marine visitors has many concerned.

Footage of Timothy Stewart's swim with an orca last week opened the floodgates for passionate debate on social media, dividing many animal lovers.

Regardless of opinion, laws are in place to protect marine mammals and humans.

"New Zealanders are lucky to share the sea around our coast with orca, whales, dolphins, seals and sea lions," DOC says.

"To ensure that we continue sharing our home with these taonga, they're protected by law under the Marine Mammals Protection Act 1978."

This legislation makes it an offence to harass, disturb, injure or kill marine mammals.

Anyone caught breaking legislation could face a maximum penalty of two years in prison or a

TopVIEW Photography captured stunning footage of this rare encounter.

WWW.TOPVIEW.CO.NZ

fine up to a maximum of \$250,000.

The Marine Mammals Protection Regulations 1992 lists how people should behave around marine mammals.

The regulations are necessary for the safety of marine mammals and people, who may put themselves at risk getting too close to wild animals.

Research shows interactions with people can have negative impacts on marine mammals, and

DOC says "marine mammals need to be given space to feed, nurse their young, interact with each other and sleep".

DOC advises the following.

-Do not disturb, harass or make loud noises near orca and other marine mammals.

-Move away from marine mammals if they show any sign of becoming disturbed or alarmed.

-Avoid sudden or repeated changes in speed or direction in a

boat or other vessel

-Don't circle or obstruct marine mammals in a boat or other vessel

-If in a boat or other vessel, try to stay at least 50 metres from a marine mammal.

-There should be no more than three vessels within 300 metres of any marine mammal

-Do not get in the water with marine mammals

-Do not feed marine mammals

360-degree selfie atop Sky Tower

STAFF REPORTER

A Kiwi photographer, who wowed the world with a stunning 360 degree selfie up the Eiffel Tower, has taken a similar photo on top of New Zealand's tallest building.

Wellington-based photographer Brady Dyer took this vertigo-inducing photo standing on the top of Auckland's Sky Tower.

Auckland's Waitemata Harbour can be seen circling the skyscrapers of the city's CBD with Dyer in the centre.

To get the epic 360-degree photo of the view, Dyer uses a Ricoh Theta S digital camera attached to a selfie pole.

He said the cameras cost about \$600 and weren't available in New Zealand yet - but could be bought online.

Dyer has been working with 360 degree photography for around a decade and says visualising a shot is difficult as the camera bends reality.

"The exciting thing about capturing these types of photos is it's

tricky to picture exactly what the final photo will look like once developed."

"There's so many different ways to display the photo that makes it tricky to picture the final shot."

Traditionally, a similar photo would require taking up to 100 images with a tripod, and stitching them together in post production. Dyer plans to visit USA, and has the Empire State building and Statue of Liberty on his list to photograph.

An epic selfie.

BRADY DYER / SUPPLIED

Make weeds work for you

BARBARA SMITH

Weeds do get a bad rap but, they'll always be around so we might as well use them to our advantage. One way to do this is to learn how to read their signals about certain environmental conditions. Knowing which weeds like particular conditions can give clues about what's going on in the soil. Instead of indiscriminately blitzing everything with herbicides, consider what weeds are telling you about drainage problems, lack of nutrients, alkaline or acidic soils or depleted topsoil.

Buttercups, for example, are a sign of poor drainage and acidic soil. Cow parsley grows where there's excess nitrogen, clover grows where it's lacking. Weeds have other redeeming features as well. Some are edible; dandelions, nasturtiums and lamb's quarters can be added to salads. As quick colonisers of bare soil, weeds can prevent erosion by wind and rain. Weeds can also work as a green crop, restoring fertility to over-worked soils as they lie fallow. Deep-rooted weeds like comfrey retrieve nutrient minerals from the subsoil and store nutrients that could be leached or blown away. Don't forget benefits for wildlife, either: flowering weeds can be vital food sources for bees and many are host plants for butterflies. Plantain in pasture increases the nutritional value of grass for grazing stock.

To identify weeds growing at your place, search Massey University's Weeds Database or visit weedbusters.co.nz.

Black Fins keep world title

STAFF REPORTER

The New Zealand Black Fins have completed a hat-trick of world lifesaving titles. The Kiwis collected their third consecutive title in the Netherlands on Monday.

Another eight medals on the final day of Rescue 2016 contributed to an already successful campaign that has seen the New Zealand Black Fins crowned lifesaving world champions in The Netherlands overnight.

The team of 12, led by St Clair's Andrew McMillan, won eight medals on the final day of Rescue 2016 to head off Australia and clinch the title.

“We've been dreaming of this day.”

Traditionally stronger in the beach events, it's the first time the Kiwis, or any team, have won the title of top team in the pool and beach events as well as the overall world title. NZ finished with 881 points ahead of Australia on 792 points with France in third on 599 points. The team started the final day with Mount Maunganui's Olivia Eaton taking silver in the women's beach flags to add to her gold in the women's beach

sprints. Mairangi Bay's Danielle McKenzie added another silver in the women's ski race. Omanu's Max Beattie then took his first of three golds for the day in the men's board race. The other individual gold came in the men's ironman and then with team mates Paul Cracroft-Wilson, Cory Taylor and Chris Dawson in the oceanman relay.

“We've been dreaming of this day and we've taken it one step at a time,” McMillan said.

The New Zealand youth team finished with a successful day in the pool to claim second overall on 735 points behind Australia (926) with Italy in third (546).

The New Zealand surf lifesaving team.

SUPPLIED

Cup goes back to Orewa

Read inspiring content over a range of topics at New Zealand's newest online community for Over-60s. Join today at oversixty.co.nz

JAY BOREHAM

The Cosgrove Trophy is back in the cabinet at the Orewa Surf Lifesaving Club for a second year in a row after it once again claimed the Northern Region Surf Life Saving Pool Championships.

Orewa's junior and senior teams won their divisions outright and the masters team's second place and points helped contribute to an overall points win ahead of Red Beach and Mairangi Bay.

Tournament categories focus on rescue capability and are geared to surf life saving's core business - saving lives.

Junior club team coach Cole Drinnan says his athletes have been training every weekend focusing on skills and getting things right.

“We were team orientated to get the title and everyone performed extremely well. Lots of personal bests and everyone put in 100 per cent for every single race. I am very proud of the kids,” he says.

Drinnan says his 15 strong junior team wasn't the biggest but definitely had the most points.

The under-14 women's team were rapt to win first, second and third in the women's 100m patient tow.

In the junior women's team Kate Wignell claimed four first places and a third, Lyric Su'a three firsts and four seconds, Emma Sutherland two firsts, a second and two thirds, Sakura Gardiner two thirds, Kendra Stinson three firsts and two seconds, Natalie Burke two thirds, Sian Bester two firsts and two thirds, Madison Savage a third, Kristian Larsen a second, Georgia Savage a second and third, Mackenzie Rogers and Isla Petherbridge gained second placings and Anna Lepua three second and two third placings.

In the junior men's team James Donovan claimed five second placings, George Wenman two seconds, Noah Makea three firsts and two seconds, Angus Kirkman three seconds, Waimana Wynyard a second placing, Alex Dunkley two seconds and two thirds and Kailen Brackenbush claimed four second placings.

In a standout moment for the senior team Ella Drinnan broke the Under-19 100m manikin tow national record, but was beaten three hours later by a member of the NZ Black Fins at 2016 Lifesaving World Championships in The Netherlands.

Get the latest smartphone now, interest free with \$0 deposit required on 12 or 24 months.

SUBSCRIBE AND SAVE UP TO 34%

Visit the Vodafone store today at Winscombe Mall, Queen St, Warkworth or Bakehouse Lane, 7A Hillary Square, Orewa. Or call 0800 4 DIGITAL (434 448).

Full phone cost must be repaid if you terminate or transfer your plan before 12 or 24 month Interest Free term selected. Vodafone terms apply. see vodafone.co.nz/interest-free

Brought to you by

stuff.co.nz

Orewa have taken the Northern Region pool championships for the second year running. SARAH CLIFF

CODEM 0345

ADVERTISING FEATURE

Summer is coming - are you ready?

Clipper Outdoor Furniture is the pride and joy of Grant Bezzant and Dorothy Fowler.

For more than 30 years, Clipper Outdoor Furniture has been creating furniture that's built to last.

Using only quality hardwood and the most durable marine glues and stainless steel fastenings, each item is handcrafted to become an object of beauty.

As you browse through its collection online or at the Silverdale factory, you'll find elegant, thoughtful designs. But more importantly, you'll find inspiration. Because helping you create your ideal home and maximise your outdoors is the foundation of Grant and Dorothy's business.

Clipper has grown mostly through word of mouth and repeat customers, who comprise more than 70 per cent of its custom. Also supplying a number of bigger commercial orders.

"We're not into high volumes," Grant and Dorothy say. "We take our time to make sure you get exactly what you want."

Their outdoor range includes dining and coffee tables, chairs, sun loungers, bench seats, swing seats and park benches, all available in contemporary designs as well as more traditional outdoor styles.

Grant and Dorothy are happy to customise their tables and chairs.

They also carry high-quality canvas umbrellas and folding canvas chairs to jazz up

Dorothy and Grant, owners of Clipper Outdoor Furniture in Silverdale.

your deck or garden, and are agents for Shade7 umbrellas and cantilevers

All Clipper furniture is guaranteed for quality and comes with durable fabrics that are rot and fade resistant, air permeable and water repellent - vital in New Zealand's climate.

A visit to the Silverdale factory reveals a hive of activity. Summer is on its way and as usual Grant and Dorothy, and their team, are busy.

Clipper Outdoor Furniture is at 25 Hibiscus Coast Rd, Silverdale, look for the big wire gate next to BP. Phone 09 426 9660. Or visit www.clipperfurniture.co.nz to view their catalogue and prices.

Home show specials at Total Look

Total Look Blinds can help you select the right product from its quality range, which includes wooden, vertical, venetian, roller and sunscreen blinds at very competitive prices.

Choosing the right blinds can be tricky, so having the support of a professional, helpful blinds team can make things a lot easier.

Recently, Total Look Blinds has also added shutter blinds to the list, which are made from quality products right here in New Zealand.

Terry Kenworthy represents Total Look Blinds on the North Shore, as far as Orewa, and a large part of West Auckland.

Terry, who has been in the blinds industry for almost 30 years now, says Total Look Blinds has earned its reputation for quality and style.

All of its blinds come with a five-year warranty.

The great strength of Total Look Blinds is its on the spot measure and quote service.

"My greatest strength would be my experience," Terry says.

"I can give advice about blinds and the blinds will always exceed clients' expectations."

The biggest mistake people make in choosing window coverings is not being given the correct advice for their specific needs. Customer service is paramount at Total Look Blinds and the reason why customers keep

Terry Kenworthy of Total Look Blinds is your local blind expert.

returning.

Cedar venetian blinds can be ready in four to five weeks.

Venetian, vertical and roller blinds can be ready in two to three weeks.

It does depend on how many orders the production department is filling, but you know that you'll be getting a perfect fit, manufactured to your window specifications and without 'cutting corners'.

Total Look Blinds never cuts down readymade blinds.

To have Terry visit your home or business phone 489 2428.

**SUBSCRIBE
AND SAVE
UP TO 34%**

- Park Benches
- Folding Furniture
- Chairs
- Canvas chairs in 30 colours
- Swingseats
- Umbrellas
- Tables – any size or shape

Quality NZ Made Kwila outdoor furniture built to last

25 Hibiscus Coast Highway, Silverdale (next to BP)

Mon-Fri 9am-4.30pm Sat 10am-3pm

Ph 09 426 9660 www.clipperfurniture.co.nz

FACTORY PRICES - VISIT OUR SHOWROOM

my.stuff.co.nz is the easy way to manage your newspaper subscription online!

www.mags4gifts.co.nz

AU-7353154AG

AU-706686AT

ADVERTISING FEATURE

Seaside Grill for a sizzling summer

You can support a local eatery and enjoy a fantastic, family meal at Seaside Grill. While you're there check out the million dollar view at the ultimate Orewa location.

The festive season is fast approaching and Seaside Grill is 'the' place to go for your Christmas event or family function as it has its own party room/courtyard at the back of the restaurant.

Seaside Grill now offers award winning Orb Coffee - with its delicious taste, a perfect way to kick-start your day.

After two years, manager June now has a great, competent team including highly trained chefs and front of house staff who are all local.

June says the team shares a passion and flair for what they do, delivering fabulous, family-friendly service. The team is now planning their spring/summer menu.

A drawcard is the spacious garden area, accessible for wheelchairs, recently renovated with a free pool table, water feature, fairy lights, shaded

Coffee with muffin is only \$5.50, includes freshly made muffins with your coffee to stay or go. Multiple options baked daily.

outdoor area - perfect for summer get-togethers.

Families are the focus at Seaside Grill, children and dogs are welcome in the courtyard area. People enjoy playing a game of pool and having a few drinks while they wait for their meal.

The menu is multifaceted, accommodating all tastes, offering a set menu, and buffet if requested. "No matter what people want, whether its dinner, lunch, grab and go meals, healthy options, salads, takeaway coffees and muffins. You name it we can do it."

Highlights include a mouth-watering steak and chips, and only fresh fish is served. All the sauces are made from scratch and there is a separate kids' menu with a variety of healthy options. Ice cream will also be served in summer.

June says they enjoy catering a variety of anniversaries, milestones and 21st parties.

Supporting local causes is also important, and over the years Seaside Grill has supported sports and school teams, plus Age Concern, hospice and other community groups. Many regular, loyal customers continue to support Seaside Grill in return.

Seaside Grill is fully licensed, right next to Orewa Beach and opposite playgrounds, at 268 Hibiscus Coast Highway, with an amazing beach view, and ample free parking. Gold card discounts of 10 per cent off are available.

Open seven days a week from 8am to 3pm, then 5pm onwards. Phone 426 2411. Visit facebook.com/seasidegrillnz/ for specials and menu updates.

Riverhead resident Julian McCurdy (right) has been developing beekeeping technology that will become more clever as apiarists add their daily data. SUPPLIED

Beekeeping technology creates buzz

KIM ACE

Ever wondered what a bee fight sounds like?

A Riverhead resident has a beekeeping technology that could be a game changer. Julian McCurdy has been working on software that allows beehives to be monitored remotely in real time via the internet.

He says the software will be cheaper than options currently available and will have a wider range of tools included to supervise bee health.

Buzztech is aiming to provide data including the temperature, weight and sound being made within the hives.

McCurdy says the noises being made in the hive can tell you a lot. For example, if the hive is being robbed, or attacked by other bees or wasps, the sound level rises dramatically. If the colony is sick the level of hum decreases. The importance to apiarists could be huge with hundreds or even thousands of hives to keep an eye on and many needing to travel to out of reach places to do so, Karl Gradon of New Zealand Manuka Group says.

McCurdy's company Buzztech, of which he is chief executive, was one of eight start-ups selected

“The software will be cheaper and will have a wider range of tools to supervise bee health.”

for the inaugural Sprout accelerator programme designed to “find the country's next agritech superstar”.

The companies received a cash investment of \$20,000 and were placed in a five month programme where they received mentoring and training from leaders in technology, research and business growth. McCurdy was paired up with Gradon from NZ Manuka, who now chairs Buzztech, and James McCarthy - founder of successful technology company Spidertracks who is also on their board.

McCurdy says the knowledge his mentors have bought on board have been a huge boost, as has the chance to work with other Sprout collaborators such as Callaghan Innovation, a Government agency that helps businesses with technology and research and development.

He says he is aiming for Buzztech “to have nailed the NZ market within the next three years”.

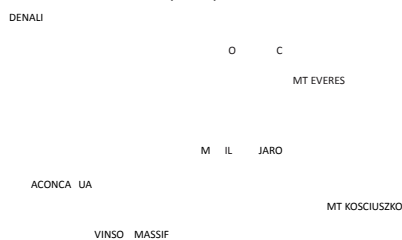
Don't have internet coverage? McCurdy says his software is able to be used in 80 per cent of beekeepers' wintering sites across the country. Beehives are often brought into locations closer to the apiarists in the colder months so the health of the hive can be monitored.

Elevate your senses with 7Summits Cuisine

For those with an adventure for taste - experience the 7Summits Cuisine Quest. Choose from 7 specially created dishes that represent the 7 highest mountains in the 7 continents featured in the famous 7 Summits Challenge.

Sit fireside watching skiers carve the snow, while the aroma of an exciting and exotic dish, freshly prepared for you, is served.

Visit us and enjoy a heightened sense of excitement.



(09) 427 0044 | snowplanet.co.nz | 91 Small Road, Silverdale

AU-7388834C

Phone: 09-426 2411

Address: 268 Hibiscus Coast Highway Orewa

SUNDAYS

8:00AM - Chapel

10:00AM - Family Service

6:30PM - Evening Service

LIVE STREAM Sundays 10AM

– cityimpactchurch.com/live

794 East Coast Road, Albany | 0800 CHURCH

It's not Sunday without it.

Eel installation wows at awards Decision concerns

NEWSDESK

A colourful eel basket sculpture at Snells Beach has taken home a runner up honour at the Resene Total Colour Awards.

The installation, described by its architects as “an enormous eel pot marooned on the shore”, used six kilometres of steel reinforcing bars and a “village of volunteers” to paint.

The vibrant red, white and yellow piece was awarded runner up for the event’s top accolade, the Nightingale Award, named after the Kiwi family who founded Resene 70 years ago.

Judges heaped praise on the installation, located at Brick Bay Sculpture Park.

“A spectacular installation, the form and colour are completely welcoming and draw you in,” judges say.

“Irresistible to young and old, it entices you to traverse through for a moving colour experience as the palette of three colours appears to dance when viewed on different angles.”

Architects Alexander Sacha Milojevic, Raphaela Rose, Ryan Mahon and Edward Roberts say the sculpture is a contemporary interpretation of an architectural ‘folly’, popular among thinkers of the 18th and 19th centuries.

The design team combined a hanging, spraying and brush system to paint the steel reinforcing bars, trialling 16 different variations of yellow before choosing Resene Hacienda to sit alongside Resene Pohutukawa.

Researching Maori myths of eels also led to the work’s title,

Daughter of the Swamp can be viewed at Brick Bay Sculpture Park, Snells Beach.

Daughter of the Swamp, named after Maui’s wife Hina.

Judges say the colour is thoroughly integrated, rippling through, just as the land does beneath it.

“The installation creates standalone excitement; it’s stunning, whimsical, but yet retains a

sense of fragility. With each new viewing angle, the colours play off each other and the installation’s form in a new way”. Resene managing director Nick Nightingale says the quality of awards this year made it difficult for judges.

“It’s always a privilege to see how architecture and design pro-

fessionals create new combinations of Resene colours each year, bringing out the best in their projects,” he says.

“With clever and adventurous use of colour in so many projects, the judges had a difficult task narrowing down the entries to just a few winners.”

SUPPLIED

PAUL MITCHELL

A tenant who let her dogs urinate throughout a house – despite a no-pets policy – doesn’t have to pay to replace the ruined carpets.

Landlords are pointing to the contentious Tenancy Tribunal ruling against a Horowhenua property owner as a concrete example of their concerns about a change in rules.

The Foxton house at the centre of the dispute stank of animal urine and the contamination was such that the carpets had to be replaced, according to a cleaning business.

A property management company agreed there was a strong, “unbearable” smell of urine. Although the tribunal accepted the tenant, Amanda Stewart, breached the tenancy agreement, it had not been established she intended to damage the carpet. But Tekoa Trust property manager David Russ said the damage was a direct result of Stewart breaking the agreement.

“We believe the tenant had dogs confined in the house that had defecated and urinated on the carpets. The damage was gross and putrid and was impossible to be remedied and the carpet had to be replaced.”

Russ said Tekoa Trust’s insurance company said each instance of damage caused by the dogs’ waste would count as a separate claim, as would each room. Fitzherbert Rowe associate Liam Hehir said landlords should review their policies.

Verge Verge Verge

We have a Fantastic Selection of Iconic Verge Spring Fashion in store now Plus a full range of their No 1. bestseller Acrobat Pant.

Verge Promo!!

Purchase Verge before 26th Sept 16 and select a free Ivys Scarf of your choice! Fresh In store now are 100’s of yummy scarves retail **\$15 - \$20.**

We have the best selection in Auckland!

320 Main Rd, Orewa Beach
Open 7 days • Sizes 8-16

AU-7264162AJ

Pinehaven Cottage

Residential Care Home is having an open day to celebrate the completion of our new purpose built dementia home.

Members of the public are invited to join us on Monday the 19th of September from 10am – 3pm at 660 Hibiscus Coast Highway, Hatfields Beach

**SUBSCRIBE
AND SAVE
UP TO 34%**

Fishers face harsh restrictions

JOHN ANTHONY

Recreational fishermen face reduced daily bag limits, increased size limits and seasonal bans unless New Zealand's fisheries are better managed, a new report says.

The report by think tank The New Zealand Initiative said New Zealand has some of the most relaxed recreational fishing rights in the world but new management ideas are needed in order to keep it that way.

Author Dr Randall Bess said the depletion of some fish stocks and increases in New Zealand's population and tourism numbers meant fishing would increasingly come under threat.

About 600,000 New Zealanders go fishing every year, but New Zealand has no recreational ocean fishing permits or reporting requirements and generous bag limits.

This was not sustainable for a population projected to increase from 4.7 million to 6 million by 2060, he said.

"Minimum size increases and reduced bag limits means catching legal-sized fish is becoming increasingly difficult," Bess said.

Stringent catch limits and seasonal restrictions, like those

About 600,000 New Zealanders go fishing every year.

implemented in the Marlborough Sounds blue cod and scallop fisheries, could be replicated in other regions, he said.

In recent decades significant change had also been imposed on the Snapper one region which covers the east coast between North Cape, 30 kilometres east of Cape Reinga, and Cape Runaway, 90 km northeast off Whakatane, out to a distance of 370 kilometres.

The daily bag limit reduced

from 30 snapper in 1985 to the current limit of seven snapper set in 2014 while the legal size limit had increased from 25 centimetres to 30 centimetres. Last year the Government announced plans to create recreational fishing parks in the inner Hauraki Gulf and the Marlborough Sounds, and compensate commercial fishermen for the loss of their catch in those areas.

The way total catch was

allocated between commercial and recreational fishermen was a highly politicised process with lobbyists pressuring the Government to allocate more of the total catch for their particular interests, Bess said.

There was also an underlying problem of complacency in recreational fisheries management and a lack of fisheries policy leadership and technical competence, he said.

SCOTT HAMMOND/FAIRFAX NZ

Fewer houses bump prices

CATHERINE HARRIS

A shortage of listings is becoming the new worry for would-be house buyers in many regions, keeping house prices firm in August.

The national median house price skirted around the half a million dollar mark at \$492,000, up 5.8 per cent for the year but down 3 per cent on the previous month.

Auckland was one of two regions that hit new record highs, with a median price of \$842,500, 14 per cent higher than a year ago.

The other was Nelson-Marlborough at \$430,000, up 12 per cent on last August. And there was a mighty 41 per cent annual increase in prices in Central Otago Lakes, which hit \$650,000.

However, the Real Estate Institute said prices were being upheld by the sheer lack of houses for sale.

Nationally "inventory" had shrunk 18 per cent in the last year and there was less than 12 weeks' supply of houses on the market in five regions which together represent the bulk of the country's house sales. Wellington was the tightest market with just seven weeks of supply and Otago had just 10 weeks, while Auckland was down to 11 weeks.

Sales in August were up 3 per cent on the previous month but they were down 3 per cent on a year earlier and in Auckland they were down 20 per cent year on year. REINZ spokesperson Bryan Thomson said the underlying trends in demand and listings were keeping price expectations high.

Threat a reminder to be prepared

MARY FITZGERALD

Having a plan in place in the event of a tsunami is a wise move. The tsunami threat triggered by the September 2 earthquake off the North Island's east coast is a timely reminder for Aucklanders to make sure they have an emergency plan in place.

"It's up to each individual to act now and have a plan to look after themselves if a tsunami, or any other emergency strikes," Auckland Council's civil defence

and emergency management director John Dragicevich says.

"This includes knowing what to do, where to go and where to meet up with family and friends."

With 3110km of coastline around Auckland, any coastal parts of the region could be affected by a tsunami.

Auckland is under constant threat and there are some simple steps that everyone can follow, Dragicevich says.

These include knowing your tsunami zone, your evaluation

point, knowing where to meet your family and friends, and signing up with Civil Defence to get alerts. People need to know where to get accurate and up-to-date emergency information.

Normal communication channels might not be working and people should also include in their planning their neighbours and people who might need help if there is an emergency, Dragicevich says. Go to aucklandcivildefence.org.nz for more.

Be prepared.

SUPPLIED

**SUBSCRIBE
AND SAVE
UP TO 34%**

CVT Transmission Specialists For more than 18 Years

1 Year or 20000 km Warranty on all CVT Transmissions

More than 150 CVT Transmissions in stock (80 different types)

WE ARE THE ONLY CVT SPECIALISTS

Nissan CVT Transmissions from **NZ \$ 1925.-**

Mitsubishi CVT Transmissions from **NZ \$ 1950.-**

Toyota CVT Transmissions from **NZ \$ 1995.-**

Honda CVT Transmissions from **NZ \$ 1895.-**

E-mail us with your car details for a written quote

All transmissions are fully remanufactured with new Pushbelt, bearings, filters, seals, frictions and gaskets. They all are supplied with the oil required for that transmission, a written Warranty form and fitting instructions.

All CVT Transmissions are supplied on exchange basis.

Freight charges are not included and will be charged for 1 sending and 1 returning back to the warehouse

Our address: 125 State Highway 5 RD2 TIRAU.

Phone numbers: 07 8831134 or 0800288695

Visit our websites: www.cvt.co.nz or www.cvt-parts.co.nz

Email us on: info@cvt.co.nz

We will not be beaten in price

AL7380768AA

To cater to our rapidly growing area:

NEW COLLEGE IN PLANNING

HEAR & BE HEARD

Tuesday 20 September, 7pm + **LIVE** via Facebook

Mahurangi Community Centre, Snells Beach

Hear from local education experts and from KingsWay Trust.

What might a new college in our community look like?

Q&A and Community Feedback session with the panel.

We want to hear from you. Supper provided.

GUEST SPEAKER & MC from The Parenting Place
PETRA BAGUST on 'How to Parent in the Digital Age'.

Learn, get involved & live streaming details:
WWW.NEWCOLLEGE.CO.NZ

Brought to you by
stuff.co.nz

CITIZEN
SCIENCE

GROW
YOUR
OWN!

HOW
TO

HELP SAVE BEES

PLAN BEE

MAKE PRESERVE GROW BUILD RECIPE

© 2016 Stuff Publishing Limited. All rights reserved. No part of this publication may be reproduced without the prior written permission of Stuff Publishing Limited.

FREE BEE-FRIENDLY WILDFLOWER SEEDS

WITH THE SEPTEMBER ISSUE OF **NZ GARDENER** – ON SALE NOW

September is Bee Awareness month, so grab a copy of NZ Gardener to get your garden buzzing!

my.stuff.co.nz

my.stuff.co.nz is the easy way to manage your newspaper subscription online!

Less travel time | More quality time | A better lifestyle

LOCAL JOBS

Situations Vacant

TO ADVERTISE: FREE PHONE: 0800 022 812 • Fax: 09 634 5600 • Email: north.class@snl.co.nz

DEADLINES: Wednesday – Phone in 10.30am • Email 9.30am • Fax 7.30am (All display advertising to be in 24 hours prior to email deadline)

Situations Vacant

CABINETMAKING PRODUCTION ASSISTANT

Are you a cabinetmaker looking to move off the tools? We are a Whangaparaoa based Kitchen Company looking for a Production Assistant to join our team. Must have experience in all aspects of kitchen manufacturing, have good communication skills and be responsible and reliable. OT rates apply. See our Trade Me ref **1149104697**. Email CV to: **craig@kitchenpeople.co.nz**

School Bus Drivers

Due to continuing growth in the area, Bayes Coachlines has more vacancies for school bus drivers... We require drivers for each school day, ranging from 3-5 hours per day, a morning and an afternoon school run for our local schools. Some charter work is available between the runs and or on weekends if you are interested in additional hours. We will cover the cost of getting / renewing your Passenger Endorsement. You need to have a class 2 and or 4 license and a "P" (passenger endorsement) to start immediately, but we can organise the training with our driver trainer to get you through the process if you don't yet have it. **If you are interested in joining our team then please give us a call: John Bayes 09 426 5504 or email John on: john@bayescoachlines.co.nz**

VANTAGE WINDOWS & DOORS

ALUMINIUM FABRICATOR

An experienced Fabricator is required for our Aluminium Window & Doors Manufacturing business. This permanent position is with a well established company on Auckland's North Shore. The position is varied within the factory from glazing to assembly. Overtime available.

Join New Zealand's leading Window & Door Company on the North Shore, 30 years in business. Call Paul Bayer today on 021 936 758 or Eliza on 444 7035. E-mail eliza@vantagewindows.co.nz

REDVALE LANDFILL - DAIRY FLAT

Labourer – Maintenance Crew

We are looking for a punctual labourer who is required to carry out grass cutting, pond pump placement and maintenance, litter and odour control, and general site maintenance. To be successful in this role you must have a Class 1 license, a "can do attitude" Trained in the safe use of a tractor and a WTR endorsement may be an advantage. Waste Management can offer a secure working environment which is drug & alcohol free and committed to Health & Safety. On-going safety training is usual. Join us.

Applications close Monday 19th September 2016
Post your CV to:
Waste Management
PO Box 228, Silverdale 0944
Or email: redvale@wastemanagement.co.nz

A Vision for Health.

- Warkworth/Snells/Omaha/Matakana
- Casual or set hours - up to 20 hrs per weekend available

Geneva Healthcare are recruiting weekend Support Workers to assist our clients with personal cares and homehelp.

If you have previous experience, your own transport, and can commit to at least a few hours every weekend, apply today.

To apply, visit genevahealth.com or phone Becky on 0800 266 577 ext 9127

Geneva Healthcare

Situations Vacant

BARBER WANTED HIS PLACE

Join the coolest and busiest barber shop in Orewa Beach. Must have minimum 5 years experience. Immediate start. **Phone PJ 027 2404086**

COOK / CLEANERS WANTED

For a small rest home situated near Warkworth. We value and treasure our people and aim to work alongside them, assisting them to live well, despite their disability.

If this type of work sounds like you, please contact us on:

09 4226006

Permanent and casual positions available.

Cook/Chef

Manly Bar & Grill is looking for an experienced cook/chef to join our small team

Must be able to work weekends and evenings

Contact Tracey manlybar@vodafone.co.nz ph: 021939391

DRIVERS

Required for Tip Trucks and Water Trucks.

Class 4 or 5 required Part-time / Full Time.

Phone **Hibiscus Water Supply** **0800 424 074** info@hibiscuswater.co.nz

Situations Vacant

EXPERIENCED OPERATORS

Required for immediate start for earth moving season. Silverdale, North Shore area. Must have experience operating excavators, compactors and Moxys **Please phone Trevor Reid on 027 599 5557**

Massage Therapist

2 experienced Thai massage therapists required for new Orchid Thai Massage Centre Orewa

Contact Danny on **022 3557938**

Storeman Wanted

JUCY BY DESIGN, a manufacturing company based in Helensville, is looking for a storeman to join our busy team. Applicants will need intermediate computer skills and be physically fit as some heavy lifting is required. Own transport is required with an immediate start available.

Expressions of interest, including CV, please email; cally.sione@jucyworld.com

Situations Vacant

PRACTICE NURSE

The Team at Albany Family Medical Centre have a permanent part-time position for an experienced practice Nurse.

You will have a current APC and Vaccinator's certificate. Experience with MT32 would be an advantage. Applicants will need to be flexible with working hours over a five day week and able to cover sickness and annual leave.

If you are looking for a supportive pro-active nursing environment then we would love to hear from you.

Please send your CV to julier@albanydocs.co.nz. (Please note, core children's worker positions – Vulnerable Children Act require full safety checks to be completed before any new employee commences work)

Child Care

CHILDCARE HOME BASED

- ✓ Babies to 5 years
- ✓ Flexible hours
- ✓ 9 hours free Subsidised care for low income families on WINZ

Conditions Apply **FOR MORE INFORMATION, CALL US TODAY!**

Phone **0800 JEMMAS** **0800 536 627** www.jemmas.co.nz

Business Opportunities

Tractor Driver/ Farm Assistant

Brick Bay Wines is seeking an experienced tractor driver / gardener / landscaper / farm assistant.

This is a varied and unique role.

Listed on TradeMe under Listing **1155923835**

Apply via email only to brian@brickbay.co.nz

Career Development & Training

BUILDERS!

Want to get qualified in

Carpentry 1,4

New help available!

Contact us **0800 200 115** or **027 684 5841**

Part time Vacancies

PART TIME CHAIRSIDE ASSISTANT/RECEPTIONIST

We require a friendly person to join our busy Orewa Orthodontic Practice.

Experience is not necessary as we will give on the job training, however you must be able to handle a fast paced environment and work well within a team. This is a responsible position & we envision this role will grow with time and experience.

The hours are 12.30 to 5.30pm Mon – Wed, however flexibility to cover for absent staff would be necessary.

Please apply to Amber at Susan Carpenter Orthodontist reception@orewaortho.co.nz

YOUR LOCAL AGENT IN YOUR LOCAL PAPER

Real Estate

TO ADVERTISE:

Phone 0800 022 812 • Fax: 634 5600 Email: classifieds@snl.co.nz

Board

To Let

BOARD WANTED

23 year old male requires board, Warkworth area, clean and tidy.

House-trained, prefer family atmosphere, new 3 year contract in Warkworth.

Ready to move now. **Phone Barry Utting 027 4935774**

Businesses for Sale

TYPICAL 'Jims' lose 10kg, earn more & have more family time. Strong HBC bus. Ph 426 0465. www.jimsmowing.co.nz

Property Management

Are you happy with your current Rental Property Management?

If you're not.

Call me to have a chat. Professional service at competitive rates.

Locally owned and operated Boutique Style Business, with that personal touch.

Liz Lawson **021 1282877** info@custompm.co.nz

Property Wanted

WANTED 3 bedroom, two bathroom, brick and tile or weatherboard home, Red Beach to Tindalls Bay. Please contact Allan, 021 2136892.

Property for Sale

TRYING to buy a property? I can help you find your next home. Call me today and let me do the leg work for you, NO FEE. Ph. Andrew 020 444 0060 www.andrewfrost.co.nz Harcourts Tandem Realty Licensed Agent REAA 2008

1ST Class Just Cabins - Great product / Great Pricing! Two sizes avail. Carpet & Curtains incl from Just \$65 pw plus del. www.justcabins.co.nz or ph 0800 587822

A CABIN 2 Rent, \$55pw + del. Big size. Carpeted. Warm. Ideal bedrm/office. 0800 111 344, RoomMateCabins.co.nz

ABANA Apartments - Newly refurbished Studio Apartments in the centre of Warkworth. Comes semi furnished with Dish Washer, Clothes Dryer and Wall Panel Heater, 2 currently available. \$325 p/w and \$335 p/w. Barfoots Warkworth (09) 422 3209 / warkworth.rental@barfoot.co.nz

ARMY BAY 2 bdrm hse dble gge + sleepout, sea views, no smoking, no dogs. \$450pw Avail. 24 Sept. 021 0260 2161

CARAVANS A bargain. Clean & tidy from \$45 pw. Prefer long term. Ph. 4127840. North Auckland Caravans. Open Mon-Fri, 8.30-5.30, Weekends by appointment.

COUNTRY Cottage for rent and management opportunity. Phone Larry (09) 422 0598

OMAHA, totally refurbished flat as new. Self-contained with separate 1 bedroom. Mostly furnished, long term, no smokers, no pets. Maximum 2 people, includes sky, water and power \$350pw, close to beach and shops. Email Ignite Property Management, info@igniteproperty.co.nz, or phone 0800 171-161 or 021 196-6391.

OREWA 1 bdrm, sunny, estuary view, lawns & water included, OSP, no smokers, no pets, \$300 pw. Ph 426 1540.

Property for Sale

Interested in selling your home?

Consistently winning regional and national sales awards Direct, honest and no nonsense approach with marketing that actually works

Contact me today **TODD COOPER** Licensed Agent REAA 2008 Harcourts Tandem Realty **021 941676 09 2837901** www.toddcooper.co.nz

Legal Services

A SPECIALIST
DRINK Drive /Traffic LAWYER.
Ph Colin Mitchell
09-489-6429

Tuition

GUITAR LESSONS. Any stage or age. Acoustic & Electric. Guitar restringing, Phil 426 0250 or 0272 320 260.

In Memoriam

BUTLAND, Mark:
1 Nov 98 — 11 Sept 15
In memory of a young leader, mentor, good mate and member of the Orewa Sea Scout Group. Never to be forgotten from friends and families from all sections.
*Day is done,
gone the sun,
from the seas,
from the hills, from the sky;
All is well, safely rest,
God is nigh.*

Health Services

DEE'S Original Old Fashion Thai Massage. Stanmore Bay. 7 days 9am-6pm 0221721095

Financial

A www.grabaloan.co.nz For a small or big loan Quick, Simple, Online

LOCAL EVENTS AND HAPPENINGS

Public Notices

TO ADVERTISE:
Phone 0800 022 812 • Fax: 634 5600
Email: clsad@snl.co.nz

Public Notices

AGM
The Wainui Environmental Protection Society Inc. is holding their AGM at the North Harbour Country Club on September 21st at 7pm. All members of WEPS, STCAG and any interested member of the public are invited to come.
Enquiries to 027 246 0438.

Public Notices

Hibiscus Coast Boating Club Inc
Annual General Meeting
to be held at
162 Brightside Road, Stanmore Bay on
Sunday 25th September at 2pm

Public Notices

AGM HIBISCUS HOSPICE Charitable and Development Trusts

Notice is hereby given that the Annual General Meeting is to be held at Hibiscus House, 2a John Dee Crescent, Red Beach at 2pm on Monday 26th September 2016; followed by afternoon tea.
Reports will be presented on last year's activities and the continuing growth and development of Hibiscus Hospice
All welcome

Proposed temporary road closure

It is proposed that Queen St (from Neville St to Mill Ln), Wharf St, Kapanui St, Baxter St & Neville St (from Warkworth St to Baxter St) be closed and limited access to Neville St (from Warkworth St to Alnwick St) on Saturday 8 October 2016 from 6am until 4pm for the Kowhai Festival Huge Day Out.
These closures apply to all except emergency vehicles. For further information please contact Auckland Transport on **09 355 3553**.

at.govt.nz

NOTICE OF AGM

In accordance with the Trust Deed governing Nga Maunga Whakahii o Kaipara Development Trust, notice is hereby given that the Annual General Meeting of Nga Maunga Whakahii o Kaipara Development Trust Members for the year ended 31 March 2016 will be held at Helensville War Memorial Hall on Saturday 24 September 2016 commencing at 10.00am.

Annual Report and duly audited financial statements may be requested by contacting Administration on 09 420 8410 or email request to admin@kaiparamoana.com.

- AGENDA
 - Welcome
 - Apologies
 - Confirm Minutes of 2014/15 AGM
 - Resolutions
 - Matters arising
- Annual Reports
 - Nga Maunga Whakahii o Kaipara Development Trust
 - Nga Maunga Whakahii o Kaipara Investments Limited
 - Ngati Whatua Nga Rima o Kaipara
 - Financial Audited Statements
 - Resolutions (Financial)
 - Strategic Priorities
 - 2016/17 Annual Plan
- General Business
 - Otene Kikokiko Block
 - Resolutions

- ITEMS OF BUSINESS:**
1. Report on the operation of the Nga Maunga Whakahii o Kaipara Group for the year ended 31 March 2016.
 2. Present the Annual Report and duly audited Consolidated Financial Statements for the year ended 31 March 2016.
 3. Present the Annual Plan for the current Income Year.

- RESOLUTIONS:** The meeting will seek Ordinary Resolution(s) for Members to consider and if thought fit, to pass the following ordinary resolutions:
- a. That the duly audited Consolidated Financial Statements for the year ended 31 March 2016 together with the Trustees and Auditors Reports be received.
 - b. That HLB Mann Judd be re-appointed as auditors of the Group and that the Trustees are authorised to fix the auditors remuneration.
 - c. That remuneration for Elected Representatives remain unchanged.

GENERAL BUSINESS RESOLUTION: The meeting will also seek Ordinary Resolution from Members to consider and if thought fit, to pass the following ordinary resolution.

- d. That Nga Maunga Whakahii o Kaipara Development Trust undertake actions to have the Otene Kikokiko Block transferred to Nga Maunga Whakahii o Kaipara Development Trust ownership within the 10 Acre Block of Ngati Whatua o Kaipara settlement claim.

Public Notices

Notice of proposal to stop road

Adjoining the corner of Sunny Heights Road and West Hoe Heights Road, Orewa

Auckland Transport, under the provisions of Section 342(1) and the Tenth Schedule of the Local Government Act 1974, proposes to stop unformed portion of road being 3001m² and 1,273m² of unformed road adjoining the corner of Sunny Heights Road and West Hoe Heights Road, Orewa shown as Section 1 and Section 2 on Survey Office Plan 494017.

The legal road to be stopped is not required for roading purposes and when stopped will be sold and amalgamated with the adjoining property.

Any persons requiring further information on the road stopping proposal can obtain a copy of the plan defining the road to be stopped during office hours from Auckland Transport, Property & Planning, Level 17 HSBC House, 1 Queen Street, Auckland Central; or by contacting Megan Curtis, Auckland Transport Property & Planning Group on 09 355 3553.

Any persons claiming to be an affected party may lodge an objection to the road stopping proposal in writing to Doug Snell, Property Management Manager, Property and Planning, Auckland Transport Private Bag 92250 Auckland 1142, or email propertygroup@at.govt.nz on or before 4pm, Thursday 27 October 2016.

David Warburton
CHIEF EXECUTIVE

at.govt.nz

Public Notices

AIRPORT DIRECT
All your transport needs
Northern Busway authorised
Ph. LIBERTY SHUTTLES
0800 99 55 11
09 420 5366 or 021 447 455
nealestevens@clear.net.nz
libertyshuttles.co.nz

Airport Shuttles, Bus, Rail & Wharf, Social Events
Northern Bus Way Access
Save up to 45 mins

Family owned and operated
24 hour Service
Call us on
0800 468 623 or 08004number1
info@alphashuttles.co.nz

Mahurangi Junior Rugby AGM
Tuesday
20th September 6pm
@ Clubrooms, Warkworth Showgrounds
All Welcome

MURDER MYSTERY DINNER Fundraiser
A night of mystery and fun.
You are the detective!
Red Beach Methodist Church, 24 Sept, 5.30pm
\$20pp, incl 2 course dinner
Tickets: Church 426 5615 or Lynley White 428 2152

Snells Beach School Out of Zone Enrolments for 2017

Enrolment at Snells Beach School is governed by an enrolment scheme, details of which are available from the school office. The Board has determined that the following places are likely to be available for out of zone students starting in 2017. The exact number of places will depend on the number of applications received from students who live within the school's home zone.

- Year 3/4 - 15 placements

There are no places currently available at any other level.
Applications for this ballot close on 12/10/2016.
Ballot date is 19/10/2016.
Ballot forms are available from the school office. (The school office will be open in the second week of the school holidays, Tues 4 th Oct – Fri 7 th Oct 9:00am – 3:00pm)
If you live in the home zone and have not yet signalled your intention to enrol your child later this year, please contact the school immediately to assist us to plan appropriately.

Local Government in Auckland

Come to a community meeting or drop-in centre and tell us what you think about local government services in your local area.

Why is this happening?

The Commission has received two applications for council reorganisation in the Auckland Council area – one from the Northern Action Group in North Rodney, the other from Our Waiheke on Waiheke Island. The Commission is now seeking a wide range of community views to assist it in assessing the applications. This is your opportunity to let us know what is important to you.

For more information including an online questionnaire go to **www.lgc.govt.nz**

Drop-in centres (anytime between 11am and 4pm)	Community Meetings (7pm start)*
Tue 20 Sept Wellsford War Memorial Library	Tue 20 Sept Wellsford District Community Centre
Wed 21 Sept Warkworth Library	Wed 21 Sept Warkworth Shoemith Hall
Mon 26 Sept Matakana Cinemas	Mon 26 Sept *8pm Matakana Cinemas
	Tue 27 Sept *12-1pm Snells Beach Mahurangi East Community Centre
Tue 27 Sept Kumeu Library	Tue 27 Sept Kumeu Community Centre
Wed 28 Sept Oneroa Waiheke Community Library	Wed 28 Sept Oneroa Morra Hall
Thu 29 Sept Ostend War Memorial Hall	Thu 29 Sept Ostend War Memorial Hall

Public Notices

Public Notices

Public Notices

COATESVILLE SCHOOL OUT OF ZONE ENROLMENTS 2017

Applications are invited at all year levels. The number of places available has not yet been determined. Applications must be received by Wednesday 12 October. If a ballot is required it will be held on Wednesday 19 October.

Application forms are available from the school Ph (09) 415-9218.

Warkworth Rodeo Club AGM

Wednesday
28th September,
8.00pm at Warkworth
Fire Brigade.

All Welcome.

Public Notice of application for renewal of off-licence

Section 101, Sale and Supply of Alcohol Act 2012

GENERAL DISTRIBUTORS LIMITED a duly incorporated company having its registered office at Auckland has made application to the District Licensing Committee at Auckland for the renewal of its off-licence in respect of the premises situated at 20-26 Neville Street, Warkworth known as Countdown Warkworth.

The general nature of the business to be conducted under the licence is that of a Supermarket.

The days on which and the hours during which alcohol is sold under the licence are: Monday to Sunday 7.00am – 11.00pm for consumption off the premises.

The application may be inspected during ordinary office hours at the office of the Auckland District Licensing Committee at Orewa Customer Services Centre, Auckland Council, 50 Centreway Road, Orewa, Auckland.

Any person who is entitled to object and who wishes to object to the renewal of the licence may, not later than 15 working days after the date of the publication of this notice, file a notice in writing of the objection with the Secretary of the District Licensing Committee at Auckland Council, Private Bag 92300, Auckland.

No objection to the renewal of a licence may be made in relation to a matter other than a matter specified in section 131 of the Sale and Supply of Alcohol Act 2012.

This is the first publication of this notice.

Section 101 Sale and Supply of Alcohol Act 2012

Rodgar Ventures Limited private company of Auckland, has made application to the District Licensing Committee at Auckland for the renewal of an on-licence in respect of the premises situated at 61 Silverdale Street, Silverdale, Auckland and known as Jamaica Blue. The general nature of the business conducted under the licence is restaurant. The days and hours during which alcohol is sold under the licence are Monday to Sunday 8.00am to 1.00am.

The application may be inspected during ordinary office hours at offices of Auckland Council at Orewa, Takapuna, Henderson, Manukau, Papakura, Pukekohe and 35 Graham Street Auckland Central.

Any person who is entitled to object and who wishes to object to the renewal of the licence may, not later than 15 working days after the date of the first publication of this notice, file a notice in writing of the objection with the Secretary of the Auckland District Licensing Committee, Auckland Council, Private Bag 92300, Auckland 1142.

No objection to the renewal of a licence may be made in relation to a matter other than a matter specified in section 131 of the Sale and Supply of Alcohol Act 2012.

This is the first publication of this notice. Filed on behalf of the applicant by Harkness Henry Lawyers, Private Bag 3077, Hamilton 3240.

my.stuff.co.nz is the easy way to manage your newspaper subscription online! You can update your email address, put your paper on hold, or report a missing or wet newspaper online at anytime and from anywhere.

my.stuff.co.nz

HIBISCUS COAST - THU 15 SEPTEMBER TO WED 21 SEPTEMBER

BAD MOMS (R16) 6:20PM
CHASING GREAT (G) Fri 1:20PM
MON-TUE 1:20PM, WED 1:20PM
DAVID BRENT: LIFE ON THE ROAD (M) THU 1:00PM
NERVE (M)
THU 10:40, 4:10, 8:30PM
FRI 3:40PM, SAT 8:40PM
SUN 8:40PM
MON-WED 3:40, 8:40PM
PETES DRAGON (PG) •
FRI 6:30PM, SAT-SUN 6:30PM
MON-WED 6:10PM
SAUSAGE PARTY (R16) •
FRI 8:40PM
SULLY (M) • FRI 11:10AM
SAT-SUN 10:50, 1:10PM, MON
11:10AM, WED 11:10AM
THE BEATLES: EIGHT DAYS A WEEK - THE TOURING YEARS (PG)
SAT 3:40PM, SUN 3:40PM

SECRET LIFE OF PETS (G) •
WED 11:00AM

GENERAL ADMISSION
BAD MOMS (R16)
THU 10:50, 6:20PM, FRI 10:50,
8:00PM, SAT 6:20PM, SUN 8:00PM
WED 8:00PM
BEN-HUR (M) MON 10:40AM
BRIDGET JONES'S BABY (M) •
FRI-SUN 12:40, 3:30, 6:10, 9:00PM
CHASING GREAT (G) THU 1:20,
8:10PM, FRI 1:20, 9:10PM
SAT-SUN 1:40PM, MON-TUE 1:20,
8:00PM, WED 1:20PM

GENERAL ADMISSION

DAVID BRENT: LIFE ON THE ROAD (M) THU 1:00PM
MON-TUE 1:00PM, WED 1:10PM
JASON BOURNE (M) THU 1:10,
8:20PM, MON-TUE 3:20, 8:30PM
WED 10:40, 8:30PM
NERVE (M) THU 10:40, 4:10,
8:30PM, FRI 3:40PM, SAT 8:40PM
SUN 10:40, 8:40PM
MON-WED 3:40, 8:40PM
PETES DRAGON (PG) •
THU 10:30, 3:50, 6:00PM, FRI 10:30,
3:50, 6:30PM, SAT-SUN 10:30, 1:00,
3:40, 6:30PM, MON-WED 10:30,
3:50, 6:10PM
SAUSAGE PARTY (R16) •
THU 1:40, 4:20, 6:40, 8:50PM,
FRI 1:40, 4:10, 8:40PM, SAT 11:30,
4:10, 8:00PM, SUN 11:30, 4:10,
9:10PM, MON 4:30, 6:30, 9:10PM,
TUE-WED 1:40, 4:10, 6:30, 9:10PM
SECRET LIFE OF PETS (G) •
THU 11:00, 1:30, 4:00, 6:10PM
FRI 11:00, 1:10, 4:00, 6:00PM
SAT-SUN 11:00, 1:30, 4:00, 6:00PM
MON-TUE 11:00, 1:10, 4:00, 6:00PM
WED 11:00, 1:30, 4:00, 6:00PM
SUICIDE SQUAD (M) WED 3:30PM
SULLY (M) • THU 11:10, 3:40, 6:30,
8:40PM, FRI 11:10, 1:30, 6:40,
8:50PM, SAT-SUN 10:50, 1:10, 6:40,
8:50PM, MON 11:10, 1:30, 6:40,
8:50PM, TUE 10:40, 1:30, 6:40,
8:50PM, WED 11:10, 1:20,
6:40, 8:50PM
THE BEATLES: EIGHT DAYS A WEEK - THE TOURING YEARS (PG)
FRI 10:40, 6:20PM, SAT 3:40,
8:30PM, SUN 3:40, 6:20PM
MON 10:50, 1:40, 6:20PM
TUE-WED 10:50, 6:20PM

SUBSCRIBE AND SAVE UP TO 34%

Brought to you by

Tide Chart

© Copyright Meteorological Service of New Zealand Limited 2016

These tide predictions are not official tide tables as specified in Maritime Rules Part 25 Nautical Charts and Publications (pursuant to Section 36 of the Maritime Transport Act 1994). © LINZ Note: Tides data supplied by Land Information New Zealand. For more information on how to interpret these tides, visit: www.linz.govt.nz/sea/tides

	Thu 15 Se	Fri 16 Se	Sat 17 Se	Sun 18 Se	Mon 19 Se	Tue 20 Se	Wed 21 Se
Auckland	H 5:37AM L 11:44AM	H 6:09PM L 12:09AM	H 6:30AM L 12:34PM	H 6:58PM L 12:59AM	H 7:21AM L 1:22PM	H 7:47PM L 1:48AM	H 8:11AM L 2:09PM
Muriwai Beach	H 8:34AM L 2:32AM	H 8:55PM L 3:21AM	H 9:22AM L 3:42PM	H 9:42PM L 4:07AM	H 10:08AM L 4:28PM	H 10:53AM L 5:12PM	H 11:11PM L 5:36AM
Stanmore Bay/ Mahurangi	H 5:39AM L 11:56AM	H 6:11PM L 12:21AM	H 6:32AM L 12:46PM	H 7:00PM L 1:11AM	H 7:23AM L 1:34PM	H 7:49PM L 2:00AM	H 8:13AM L 2:21PM
Weiti River Entrance	H 5:38AM L 11:51AM	H 6:10PM L 12:16AM	H 6:31AM L 12:41PM	H 6:59PM L 1:06AM	H 7:22AM L 1:29PM	H 7:48PM L 1:55AM	H 8:12AM L 2:16PM
Omaha Cove	H 5:29AM L 11:43AM	H 6:01PM L 12:13AM	H 6:21AM L 12:34PM	H 6:50PM L 1:02AM	H 7:11AM L 1:23PM	H 7:38PM L 1:50AM	H 8:00AM L 2:12PM
Great Barrier Tryphena	H 5:15AM L 11:31AM	H 5:48PM L 12:01AM	H 6:09AM L 12:22PM	H 6:37PM L 12:51AM	H 7:00AM L 1:11PM	H 7:26PM L 1:40AM	H 7:51AM L 2:00PM
Mangawhai Heads	H 5:42AM L 11:49AM	H 6:14PM L 12:14AM	H 6:35AM L 12:39PM	H 7:03PM L 1:04AM	H 7:26AM L 1:27PM	H 7:52PM L 1:53AM	H 8:16AM L 2:14PM
Kaipara Harbour Pouto	H 9:14AM L 3:02AM	H 9:35PM L 3:51AM	H 10:02AM L 4:12PM	H 10:22PM L 4:37AM	H 10:48AM L 4:58PM	H 11:33AM L 5:21AM	H 11:51PM L 5:42PM
Sun rise & set	Rise 6:20AM Set 6:13PM	Rise 6:19AM Set 6:13PM	Rise 6:19AM Set 6:13PM	Rise 6:17AM Set 6:14PM	Rise 6:16AM Set 6:15PM	Rise 6:14AM Set 6:16PM	Rise 6:13AM Set 6:17PM
Moon rise & set	Rise 4:24PM Set 5:05AM	Rise 5:31PM Set 5:46AM	Rise 5:31PM Set 5:46AM	Rise 6:40PM Set 6:25AM	Rise 7:50PM Set 7:04AM	Rise 9:00PM Set 7:44AM	Rise 10:09PM Set 8:26AM

ANNUAL SPRING CLEARANCE

Sleepyhead and Serta beds

Hurry in while stocks last!

SANCTUARY

Kensington, Knightsbridge, Chelsea and Westminster

Features Sleepyhead's Sensorzone® with FusionGel® Memory Foam and Latex Gold®.

HD CHIROPRACTIC KAURI PLUSH

NZ's No.1 selling innerspring system, endorsed by the NZ Chiropractors' Association for superior support. Also featuring Graphene, FusionGel®, and Latex Gold®.

KOWHAI POP UP

Perfect for the kids or unexpected guests.

Knightsbridge Queen set was \$6,315

Now \$3,157

Queen set was \$4,880

Now \$2,440

Exclusive to The Bedpeople

Now \$1,290

NOBU MATTRESS

Dreamfoam® comfort layers ensure you sleep in true comfort.

PERFECT SLEEPER INDIANA

The firm feel Indiana features Serta pocket spring® with Dreamfoam®. For a truly luxurious sleep.

PERFECT SLEEPER VIRGINIA

The Plush feel Virginia features Serta pocket spring® with Dreamfoam® and Latex Gold®. For a truly luxurious sleep.

Exclusive to The Bedpeople

Single **\$199**

K/Single **\$259**

Queen **\$319**

Queen set was \$3,390



Now \$1,695

Queen set was \$4,315



Now \$2,157

ALBANY
The Gateway, Corban Ave
260 Oteha Valley Road
Call us 09 447 3983
OPEN 7 DAYS

WAIRAU PARK
8d Link Drive
(next to ASB Bank)
Call us 09 443 3922
OPEN 7 DAYS

Botany
Unit 1 The Hub,
451 Ti Rakau Drive
Call us 09 271 6387
OPEN 7 DAYS

Newmarket
27 Crowhurst Street
Call us 09 523 4101
OPEN 7 DAYS

Manukau
The Supa Centa,
Cavendish Drive,
Call us 09 263 6597
OPEN 7 DAYS

Westgate
57-61 Maki St
Massey
Call us 09 903 9680
OPEN 7 DAYS

12 months or 5 r.e.
Conditions apply.
See in store for details.